

DISAPPEARING 9-PATCH QUILT

Finishes to 63½" × 76½"

CUT FABRICS



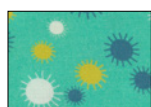
- From ¾ yard **teal packed floral**, cut:
- (10) 5" × 5" squares for **piecing**



- From ¾ yard **blue packed floral**, cut:
- (16) 5" × 5" squares for **piecing**



- From ⅔ yard **white circle ditsy**, cut:
- (32) 5" × 5" squares for **piecing**



- From 7" × WOF **teal circle ditsy**, cut:
- (5) 5" × 5" squares for **piecing**



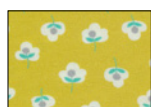
- From ¾ yard **blue circle ditsy**, cut:
- (16) 5" × 5" squares for **piecing**



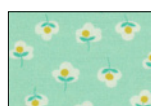
- From ½ yard **white lattice**, cut:
- (20) 5" × 5" squares for **piecing**



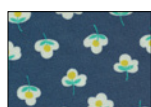
- From ⅔ yard **white floral ditsy**, cut:
- (28) 5" × 5" squares for **piecing**



- From ½ yard **yellow floral ditsy**, cut:
- (7) 2" × WOF strips for **inner border**



- From 7" × WOF **teal floral ditsy**, cut:
- (8) 5" × 5" squares for **piecing**



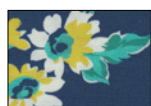
- From ¾ yard **blue floral ditsy**, cut:
- (10) 5" × 5" squares for **piecing**



- From ¾ yard **blue with yellow bouquets**, cut:
- (14) 5" × 5" squares for **piecing**



- From ⅞ yard **teal tonal floral**, cut:
- (7) 5" × 5" squares for **piecing**
 - (8) 2½" × WOF strips for **binding**



- From 72" × 21" **blue tossed floral**, cut:
- (4) 4½" × 72" strips for **outer border**
- From ¾ yard **blue tossed floral**, cut:
- (14) 5" × 5" squares for **piecing**



ALSO REQUIRED

- 4 yards for backing

RECOMMENDED PRODUCTS

- Olfa Spinning Rotary Mat 17" × 17"
- Creative Grids 2½" × 24½" Ruler
- Konfetti Neutral Thread Set
- Patchwork Pins
- Magnetic Pin Caddy
- Rotary Cutter

All available at ShabbyFabrics.com

As seen on our
HOW TO MAKE A
DISAPPEARING
9-PATCH BLOCK

video featured on our YouTube channel:



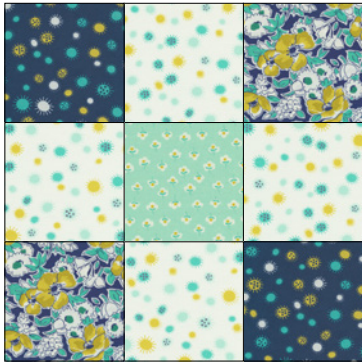
[YouTube.com/Shabby Fabrics](https://www.youtube.com/ShabbyFabrics)

MAKE 9-PATCH BLOCKS

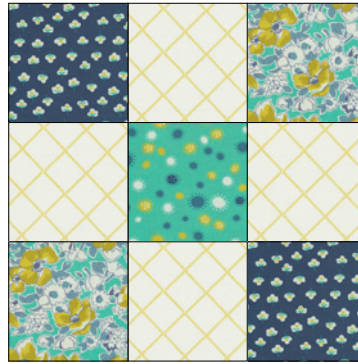
Referring to 9-Patch Block diagrams (*below*) for fabric placement, make a total of (20) 9-Patch blocks as shown.

Sew squares together in rows; press seams away from white. Sew rows together; press seams open.

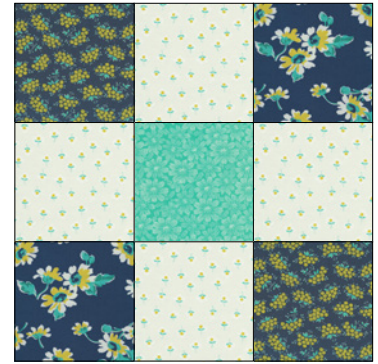
9-Patch Block



Make 8



Make 5



Make 7

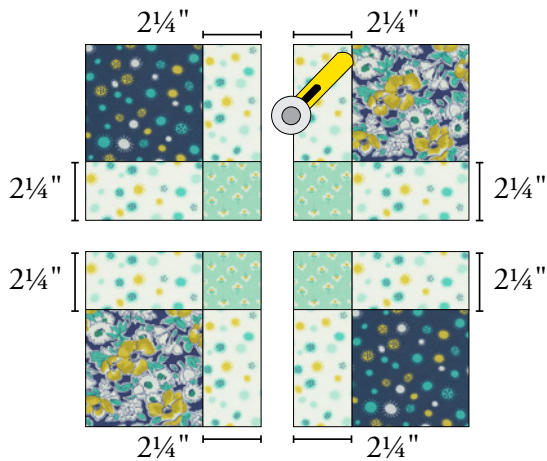
Each block will measure 14" x 14".

DISAPPEARING 9-PATCH BLOCKS

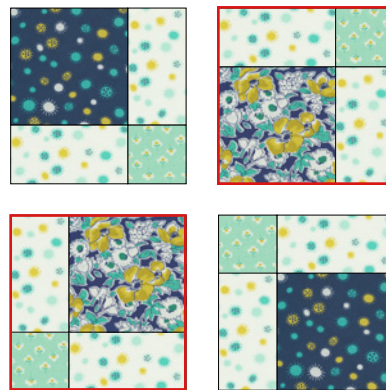
STEP 1: Cut (1) 9-Patch Block in half both vertically and horizontally by measuring 2¼" from the seams.

STEP 2: Rotate blocks (outlined in red) as shown.

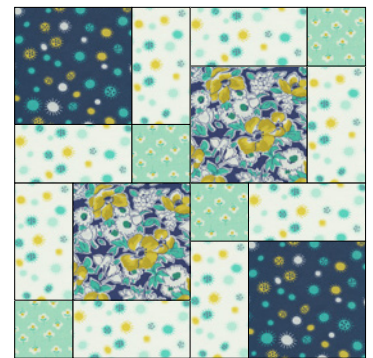
STEP 3: Sew squares back together, pressing seams as desired.



Step 1

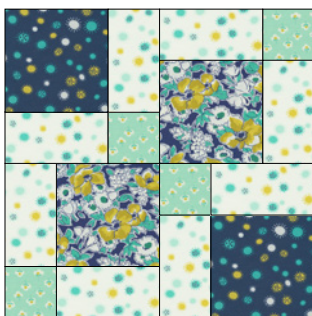


Step 2

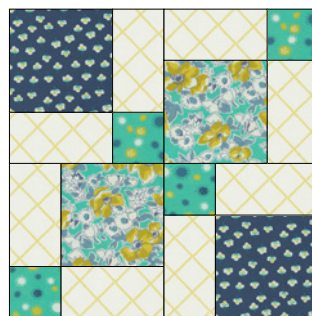


Step 3

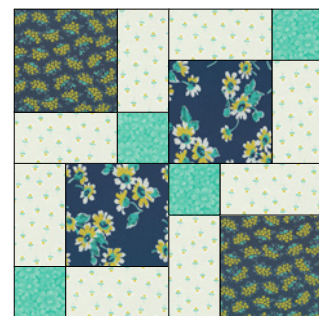
Block will now measure 13½" x 13½". Repeat with all 9-Patch Blocks to make a total of (20) Disappearing 9-Patch Blocks.



Make 8



Make 5



Make 7

ASSEMBLE QUILT

Refer to diagram (*right*) for placement and orientation of blocks.

Arrange quilt blocks as shown, in five rows of four each. Sew blocks together in rows, pressing seams open. Sew rows together, pressing seams open.

For remaining steps, press all seams toward borders.

Piece **inner border** strips into one long strip. Sew an inner border strip to the left and right sides of the quilt, and trim to be even with the quilt. Sew an inner border strip to the top and bottom of the quilt, and trim to be even with the quilt.

Sew an **outer border** strip to the left and right sides of the quilt, and trim to be even with the quilt. Sew an outer border strip to the top and bottom of the quilt, and trim to be even with the quilt.



FINISH QUILT

Layer top, batting, and backing. Quilt as desired.

Piece **binding** strips into one long strip. Fold in half lengthwise, wrong sides together, and press. Line up raw edges of the binding with the raw edge of the quilt. Sew binding to the front side of the quilt, starting at any side. Turn the binding over and hand stitch to the back of the quilt.