





SUPERSIZE



SHOO FLY

DESIGNER MALKA DUBRAWSKY OF
A STITCH IN DYE (STITCHINDYE.COM)

The giant size of this traditional block—each one is nearly 3 foot square—makes it look modern. Combine the big blocks into a large throw that's quick and easy to put together.

materials

- ▶ 2—1-yard pieces and 2— $\frac{1}{2}$ -yard pieces assorted light solids (blocks, binding)
- ▶ 6— $\frac{3}{4}$ -yard pieces assorted prints in red, blue, green, orange, and yellow (blocks, binding)
- ▶ $6\frac{1}{8}$ yards backing fabric
- ▶ 76×109 " batting

Finished quilt:

$100\frac{5}{8} \times 67\frac{1}{4}$ "

Finished block:

$33\frac{3}{8}$ " square

Quantities are for 44/45"-wide, 100% cotton fabrics.

Measurements include $\frac{1}{4}$ " seam allowances. Sew with right sides together unless otherwise stated.

cut fabrics

Cut pieces in the following order.

From each light solid 1-yard piece, cut:

- ▶ 4—12" squares
- ▶ 2— $11\frac{5}{8}$ " squares
- ▶ 2— $1\frac{1}{4} \times 24$ " binding strips

From each light solid $\frac{1}{2}$ -yard piece, cut:

- ▶ 2—12" squares
- ▶ 1— $11\frac{5}{8}$ " square
- ▶ 2— $1\frac{1}{4} \times 24$ " binding strips

From each assorted print, cut:

- ▶ 2—12" squares
- ▶ 4— $11\frac{5}{8}$ " squares
- ▶ 2— $1\frac{1}{4} \times 13$ " binding strips

assemble blocks

- 1 | For one block, gather two 12" squares and one $11\frac{5}{8}$ " square from one light solid and two 12" squares and four $11\frac{5}{8}$ " squares from one print.
- 2 | Use a pencil to draw a diagonal line on wrong side of each light solid 12" square.
- 3 | Layer a marked square atop a print 12" square. Sew together with two seams, stitching $\frac{1}{4}$ " on each side of drawn line (Diagram 1).
- 4 | Cut pair apart on drawn line to make two triangle units. Press each triangle unit open, pressing seam toward print, to make two triangle-squares. Each triangle-square should be $11\frac{5}{8}$ " square including seam allowances.
- 5 | Repeat steps 3 and 4 with remaining marked square and remaining print square to make four triangle-squares total.
- 6 | Referring to Diagram 2, sew together triangle-squares, print $11\frac{5}{8}$ " squares, and light solid $11\frac{5}{8}$ " square in three rows. Press seams toward print squares. Join rows to make a Shoo Fly block; press seams away from center row. The block should be $33\frac{3}{8}$ " square including seam allowances.
- 7 | Repeat steps 1-6 to make six Shoo Fly blocks total.

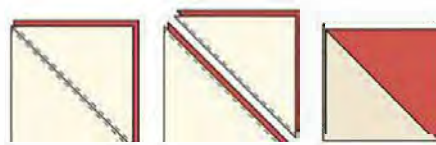


DIAGRAM 1

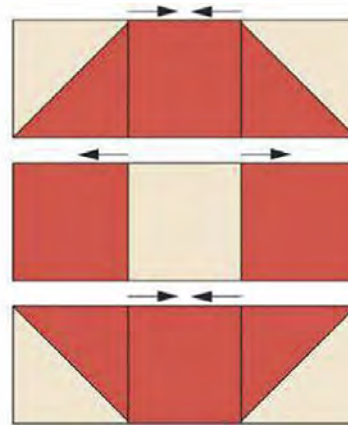
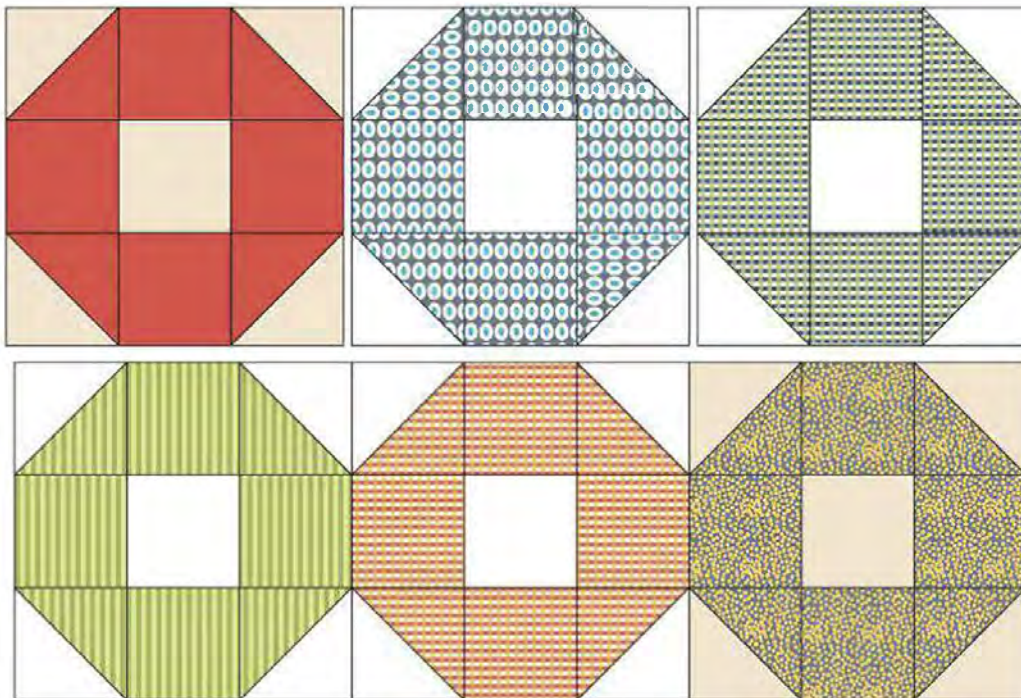


DIAGRAM 2

WANT TO MAKE THE QUILT BIGGER?

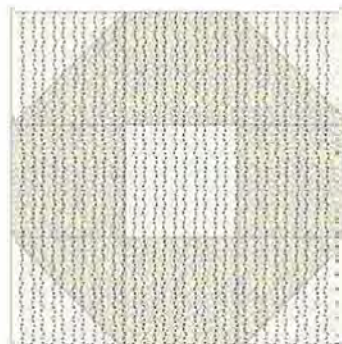
To convert *Supersize Shoo Fly* into a bed-size quilt, just add three more blocks to make it $100\frac{5}{8}$ " square, which is king-size with a 12" drop or queen-size with a 20" drop.



QUILT ASSEMBLY DIAGRAM

assemble quilt top

Referring to Quilt Assembly Diagram, lay out blocks in two horizontal rows, rotating every other block 90° so seams will nest. Sew together blocks in each row. Press seams in opposite directions. Join rows to make quilt top. Press seam in one direction.



QUILTING DIAGRAM

finish quilt

- 1 | Layer quilt top, batting, and backing; baste. (For details, see Complete Quilt, Pattern Sheet 3.)
- 2 | Quilt as desired. Designer Malka Dubrawsky machine-quilted rows of serpentine stitches, spaced about 1" apart, across the quilt top (Quilting Diagram).
- 3 | Malka extended the block design to the quilt edge by piecing strips of individual block

prints and solids into her single-fold binding using straight seams. She aligned the binding prints with the changing prints of the blocks as she added the binding to the quilt. She didn't worry about matching the light solid binding colors to the light solid background colors.

To replicate her binding, sew together short ends of a light solid 1½"x24" binding strip and an assorted print 1½"x13" binding strip that matches the block

nearest your starting point. Press seams open. Align binding strip seam with the edge of the corresponding-print block seam (see photo, below) and pin.

Sew pieced binding strip to the quilt edge, beginning and ending 2" from each end of strip. Remove quilt from beneath the presser foot. Turn back the binding to check that the seam line and color change align.

Turn binding back atop the quilt top. Mark

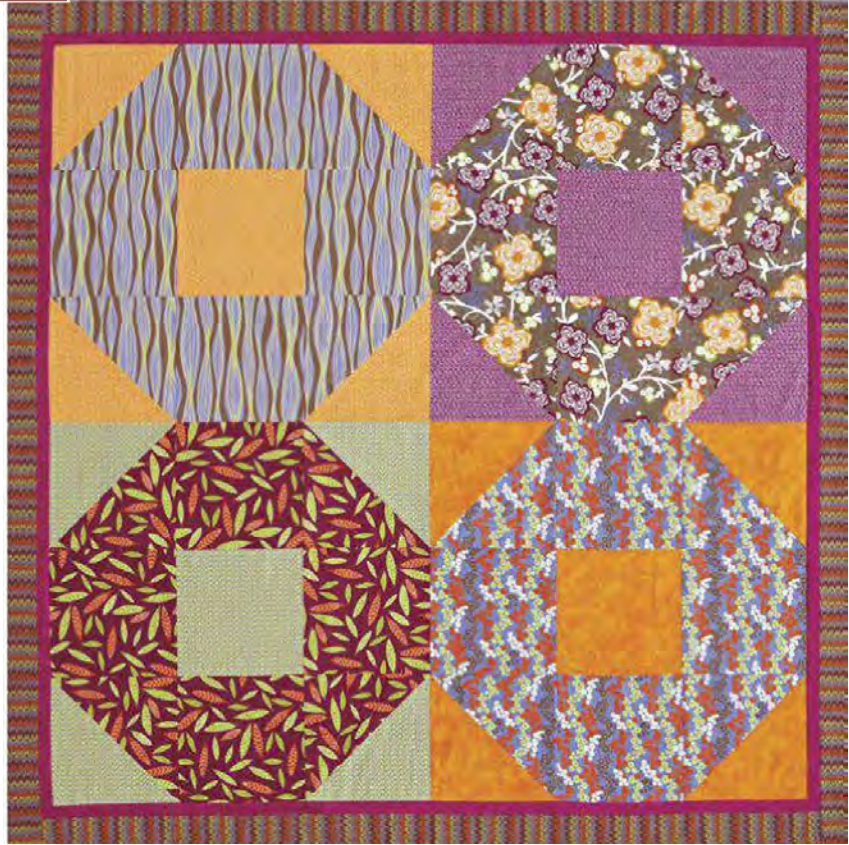
a line on the print end of the pieced binding strip ¼" past the next block seam line; trim on drawn line. Align a light solid 1½"x24" binding strip with trimmed end; sew together using a ¼" seam. Press seam open.

Work in same manner around quilt top until you reach the beginning of the pieced binding. (For details on turning corners, see Complete Quilt.) Turn raw edge of pieced binding strip under ¼". Turn binding to quilt back and hand-sew folded edge in place.





color option



Having trouble finding the perfect project for your favorite large-print fabrics? Quilt tester Laura Boehnke showcases some in this four-block throw. She changed the color palette to deep jewel tones with medium-tone backgrounds and added a skinny fuchsia inner border and a multicolor zigzag print outer border to tie the blocks together. *



JOIN THE
WOW
COMMUNITY
FACEBOOK



JOIN HERE