



## **BONUS** patterns included

**START FREE TRIAL**

This is the be-all & end-all  
for streaming quilting and  
sewing videos!



### **Your FREE TRIAL includes access to:**

- 750+ multicraft episodes
- 500+ pattern downloads
- Quiltalongs (do a little each week!)
- Exclusive social media communities
- Stitch tutorials
- Photo Gallery (share photos and admire others')
- Product reviews given by our experts
- Weekly Program Guide (never miss what's NEW!)



**START FREE TRIAL**

# GRANDMOTHER'S FLOWER GARDEN

The Grandmother's Flower Garden was one of Grandmother's most popular patterns. The quilt shown is similar to many quilts of this design from those early days. This scrap quilt has worn edges, but it is just as warm as the day it was finished over 75 years ago.

---

FROM THE COLLECTION OF SANDRA L. HATCH

---

## Project Specifications

Skill Level: Intermediate  
 Quilt Size: Approximately  
 74¼" x 88½"  
 Unit Size: 8¼" x 9¼"

## Materials

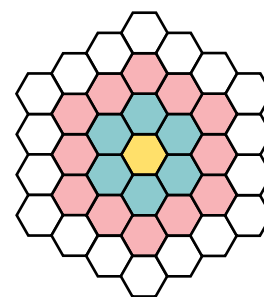
- 4 yards muslin
- 1¾ yards green solid
- 1 yard gold solid
- ⅛–¼ yard each of a variety of solids and prints for flower petals
- Backing 80" x 94"
- Batting 80" x 94"
- 20 yards self-made or purchased binding
- Basic sewing tools and supplies

## Project Note

The flowers in this quilt are made with three rounds of hexagons all with the same-color center. The flowers are separated with a row of muslin hexagons and small green triangles. The triangles could have been eliminated and the hexagon shapes stitched to one another, but the green triangles and muslin hexagons create a walkway, or path, in the garden of flowers.

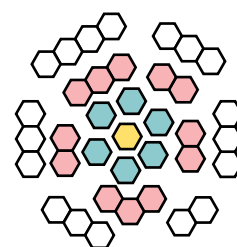
## Instructions

**Step 1.** Cut A fabric patches for one Grandmother's Flower Garden unit referring to Figure 1. Beginning with the first row, sew a solid-color A to each side of the center A, joining as

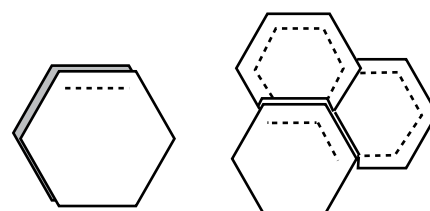


**Grandmother's Flower Garden**  
 8¼" x 9¼" Block

shown in Figure 2. Add a round of print A's and then a round of muslin A's to complete one flower unit.



**Figure 1**



**Figure 2**







**Step 2.** Piece 102 flower units.

**Step 3.** Join nine flower units with solid green B diamonds and C triangles to make a row referring to Figure 3. Repeat for six rows.

**Step 4.** Complete 10 half-flower shapes as shown in Figure 4. Join two half-units with eight pieced flower units to make five rows, beginning and ending with half-units.

**Step 5.** Join eight whole flower units to make one row for the top.

**Step 6.** Join the rows with B diamonds and C triangles referring to the Placement Diagram and Figure 3 again to complete the quilt top.

**Step 7.** Prepare the pieced top for quilting. **Note:** *The quilt*

*shown was quilted ¼" from seams on all hexagons. This is the most common way to quilt the pattern.*

### Completing the Quilt

**Step 1.** Press quilt top on both sides; check for proper seam pressing and trim all loose threads.

**Step 2.** Sandwich batting between the stitched top and the prepared backing piece; pin or baste layers together to hold. Quilt on marked lines and as desired by hand or machine.

**Step 3.** When quilting is complete, remove pins or basting. Trim batting and backing fabric edges even with raw edges of quilt top.

**Step 4.** Join binding strips on

short ends with diagonal seams to make one long strip; trim seams to ¼" and press seams open.

**Step 5.** Fold the binding strip in half with wrong sides together along length; press.

**Step 6.** Sew binding to quilt edges, matching raw edges, mitering corners and overlapping ends.

**Step 7.** Fold binding to the back side and stitch in place to finish.

**Note:** *The quilt shown was bound around each hexagon shape on the edge. It was not squared off. This edge finish looks very nice and, although it takes more time than a straight-edge finish, adding pieces to square up the edge would add time to the completion of the quilt top.* ♦

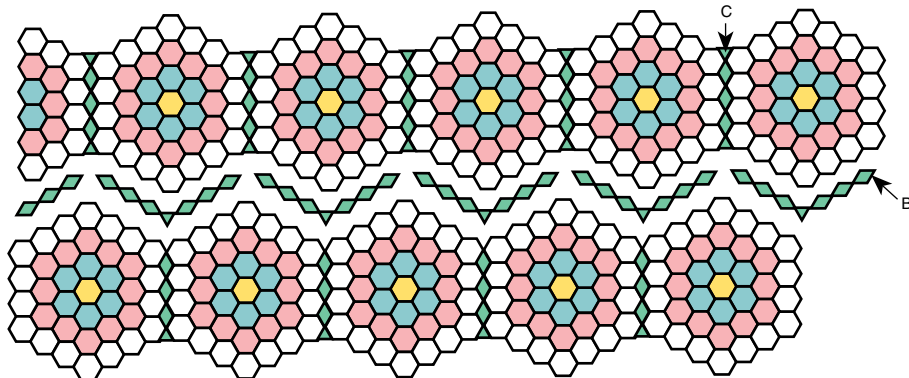
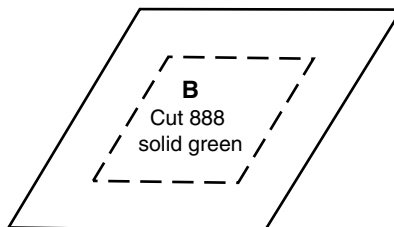
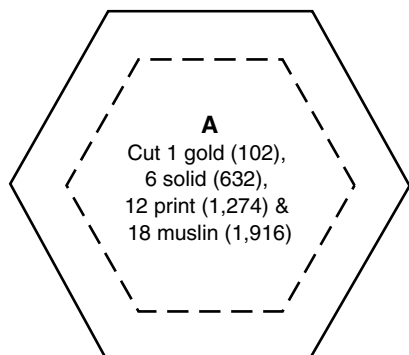


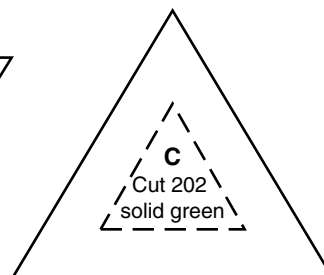
Figure 3

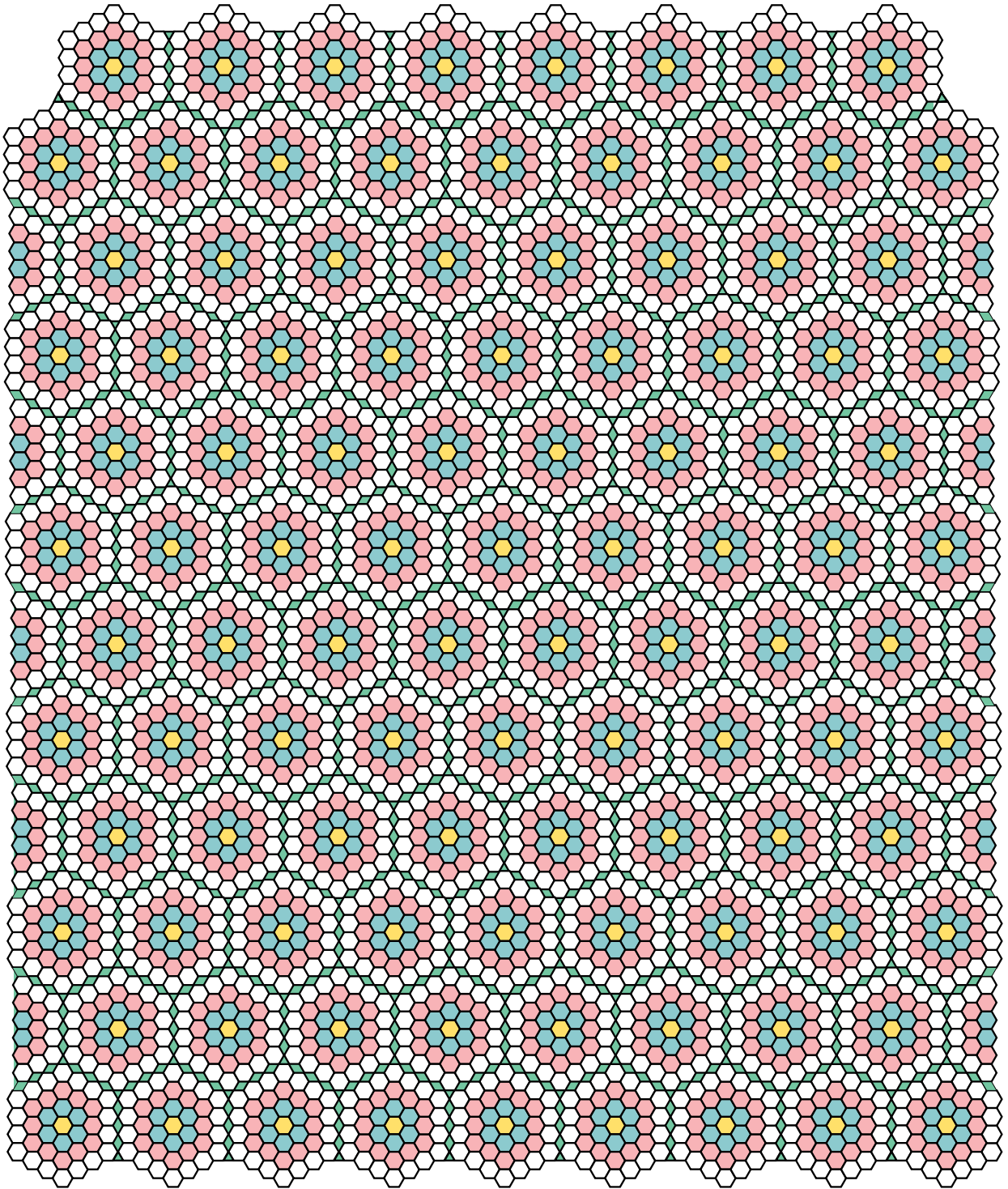


Figure 4



When printing pattern pieces check to make sure your print settings are set to print at 100 percent and page scaling displays "None."





**Grandmother's Flower Garden**

Placement Diagram  
Approximately 74¼" x 88½"

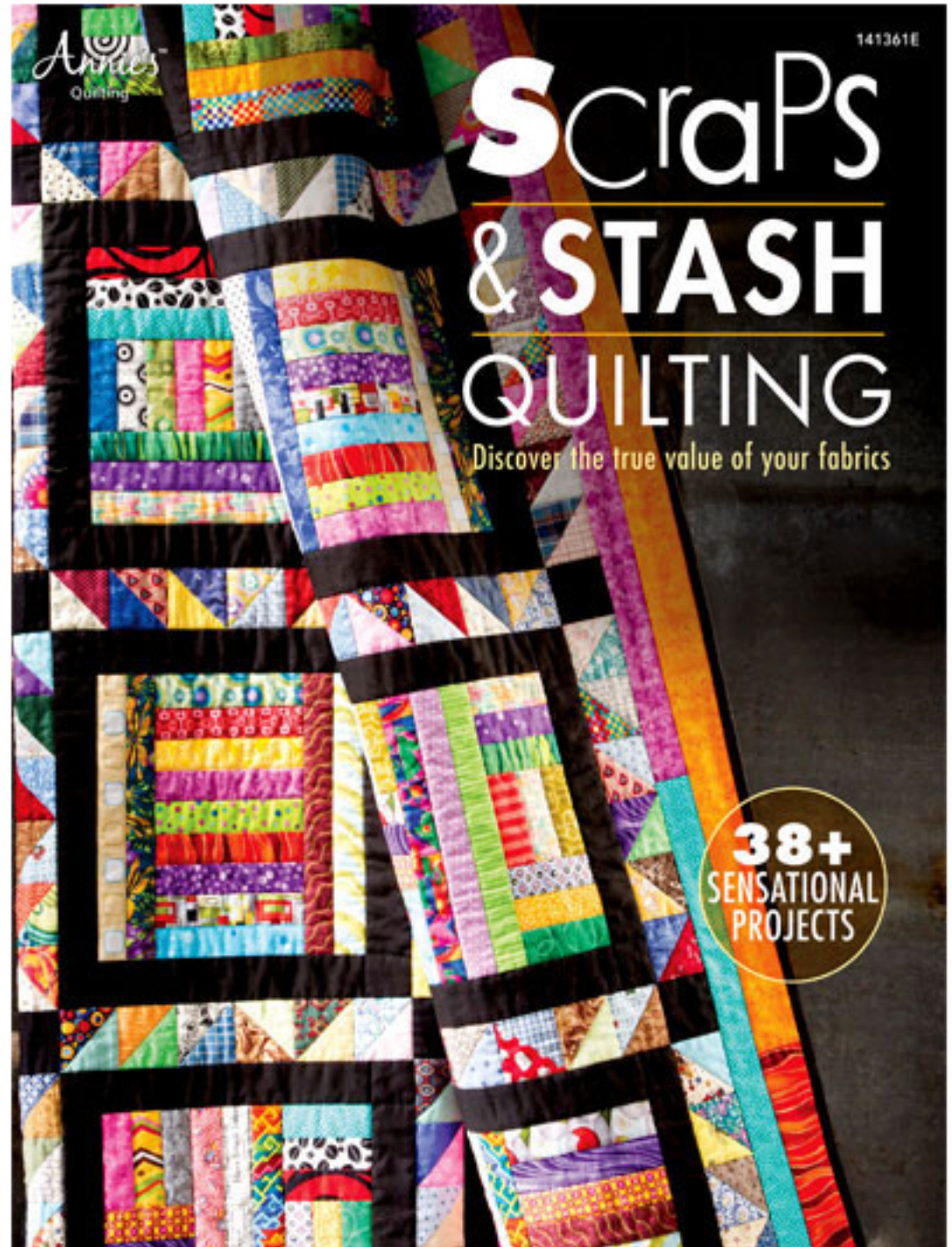


Order today at

**e-PatternsCentral** 

The fastest, easiest way to shop for patterns.

38 sensational  
projects to use up  
your favorite  
fabrics from your  
stash!



Scraps & Stash Quilting

