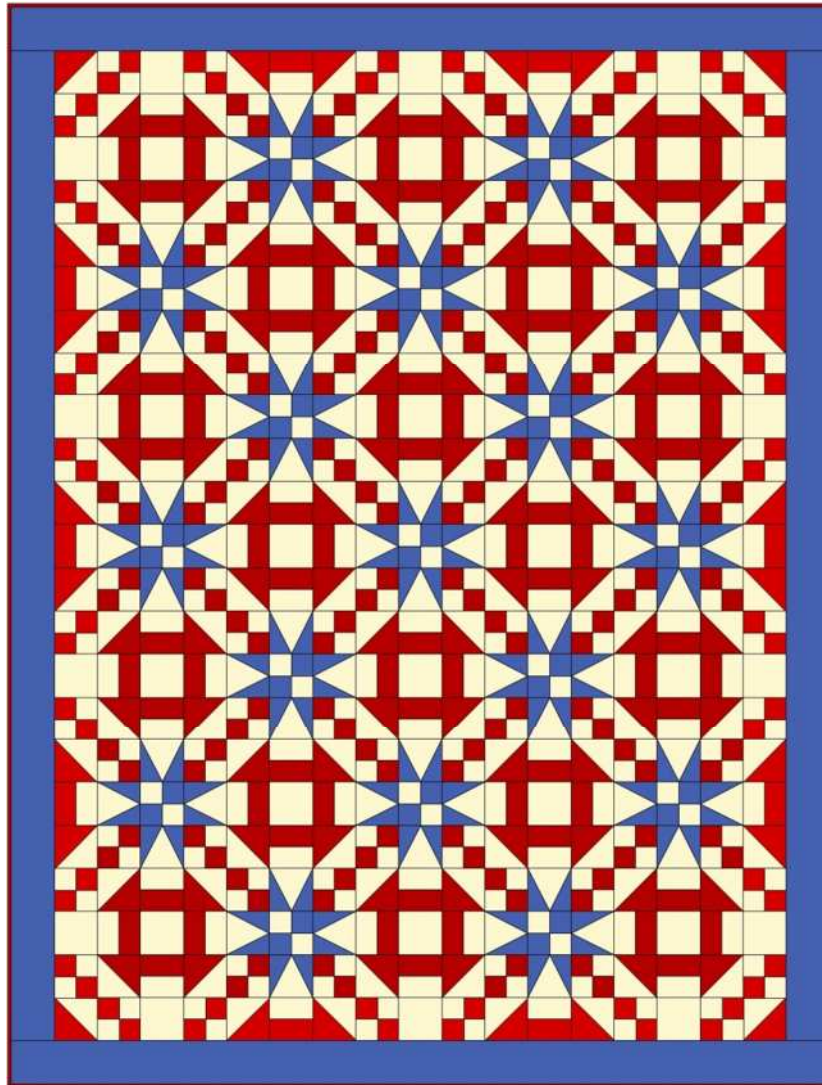


CHURN DASH & STARS

QUILT SIZE IS APPROXIMATELY 57 x 75

BLOCK SIZE 9 INCHES (9.5 INCHES WITH SEAM ALLOWANCES)



QUILT NOTES:

1. You can either make this quilt as shown above with a pieced border that completes the circle effect of the blocks or you can add plain borders which will be shown at the end of the instructions
2. The quilt is shown in three colors but you can make it scrappy by using lots of reds, blues, and white/cream/tans.
3. **UNTESTED** yardage from EQ7 shows that the quilt as pieced above would take 1 and $\frac{3}{4}$ yards of red; 2 and $\frac{1}{2}$ yards of white; and 1 and $\frac{5}{8}$ yards of blue which assumes that the long strips for the border are pieced.

PIECING BLOCKS – BLOCK A

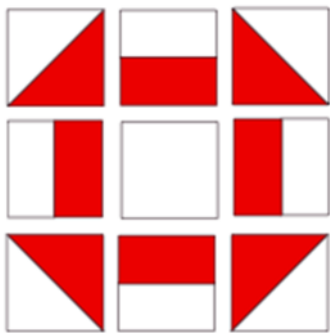
Churn Dash block – piece 18

You will need a variety of red and white strips cut 2 inches which will be used for these Churn Dash blocks and the 4 patches in the star blocks. So make a variety of strips sets sewing one red to one white fabric.

For each Churn dash block you will need:

- (4) 3.5 inch half square triangles made using any method you choose from your red and white fabric.
- (1) 3.5 inch white square
- (4) 3.5 inch sections sub cut from your red and white strip sets.

Assemble these elements as shown below.



Star block – piece 17

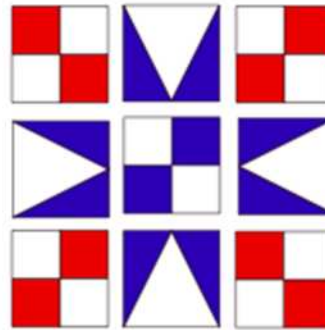
In addition to the red and white strip sets, you will need blue and white ones for the star center four patches. You will cut these strips 2 inches as you did for the red and white strips. Sub cut into 2 inches and sew two together for a 3.5 inch four patch (includes seam allowance)

Star points can be paper pieced (see download on project page), pieced using Peaky and Spike templates, or cut from the Triangle in a Square die from Accuquilt.

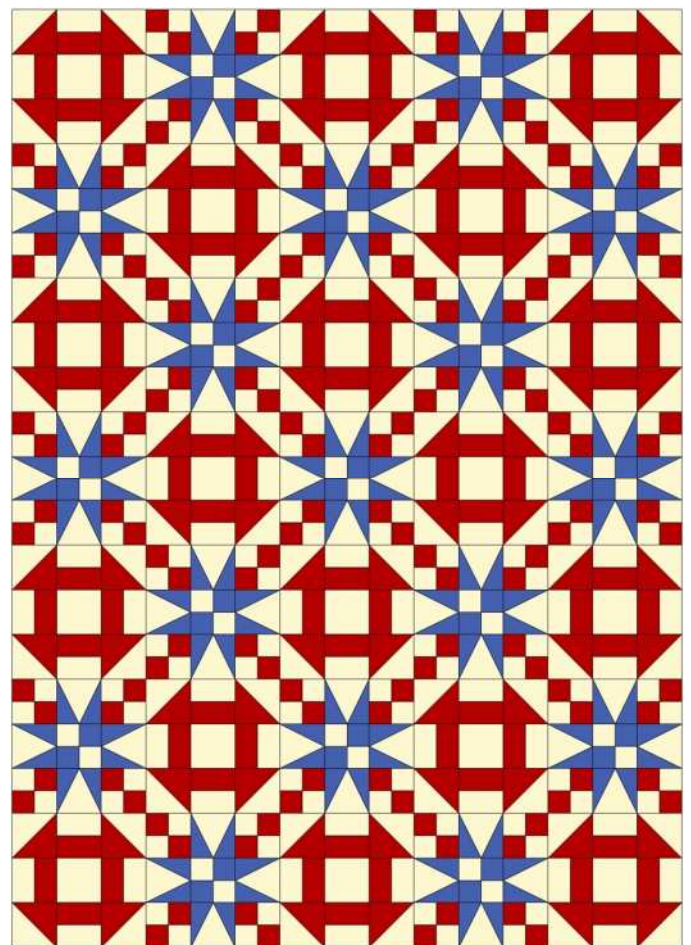
For each block you will need:

- (4) 3.5 inch star points
- (4) 3.5 inch red/white four patches
- (1) 3.5 inch blue/white four patch

Assemble blocks as shown below.



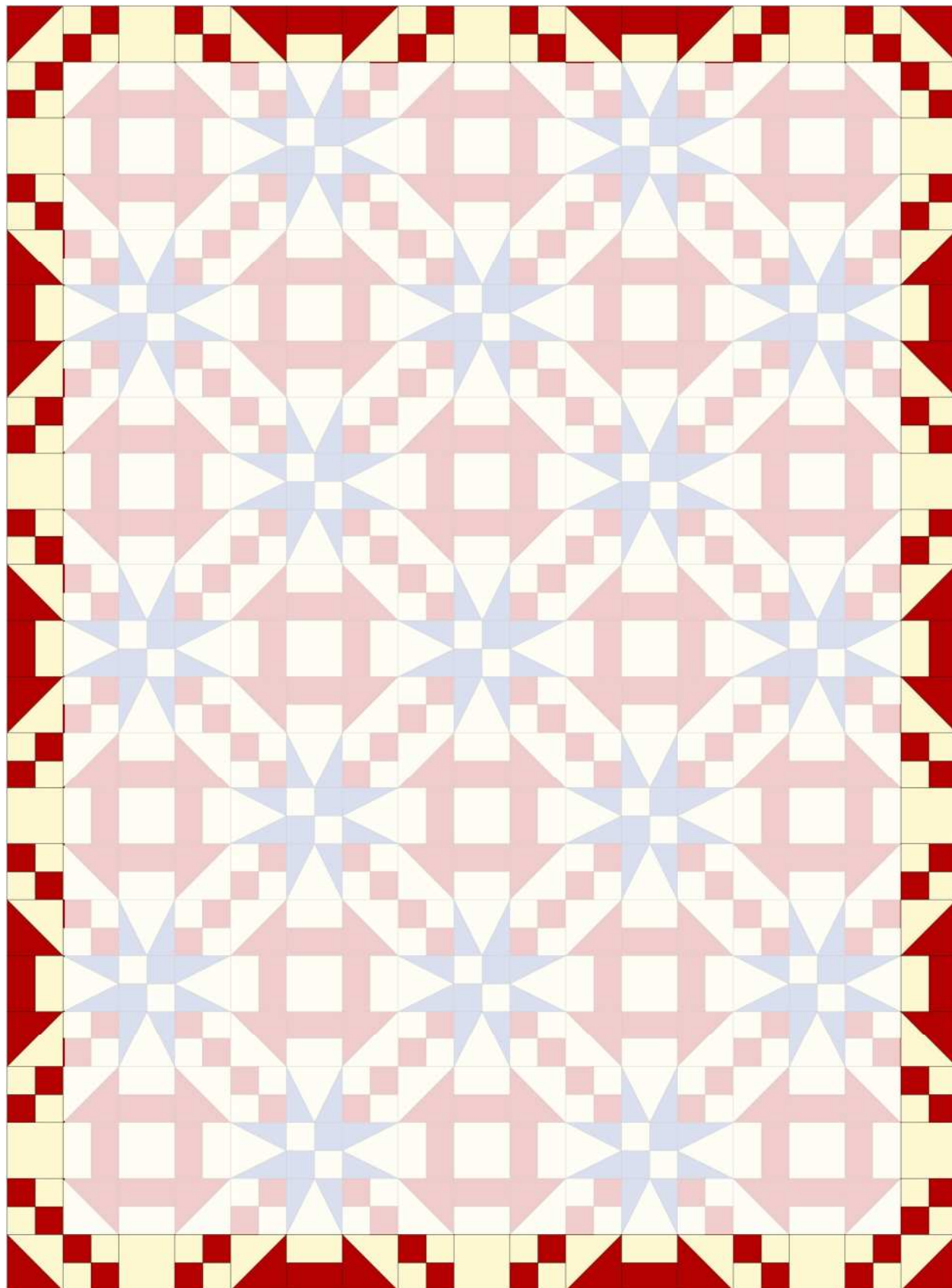
Following the diagram below, assemble the blocks starting with a Churn Dash.



You will piece the first border from a combination of red/white half square triangles, 4 patches, red/white sections from the churn dash blocks, and white squares. All should measure 3.5 inches.

Refer to the diagram below for placement.

Finish the quilt with a blue border cut 3.5 inches.



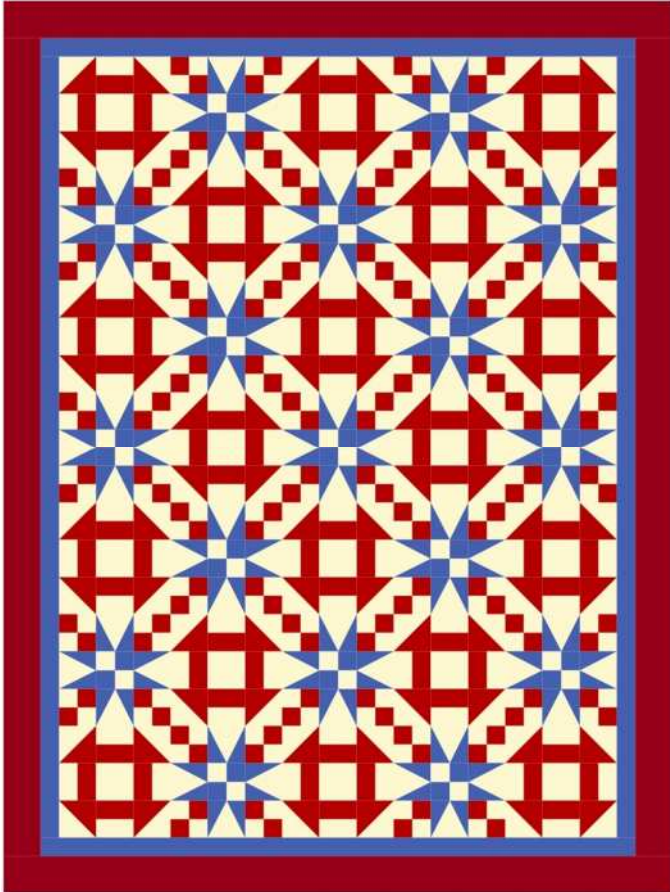
ALTERNATE BORDERS

If desired, the quilt can be finished with plain borders.

Inner border is cut 2 inches

Outer border is cut 3.5 inches

Quilt size is approximately 54 x 72



Churn Dash Quilt Block

Cutting Chart



Final Block Size	2 Strips (1 light & 1 dark color)	1 Square	2 Squares for T's (1 dark color & 1 light color)	Trim HST's and strip blocks to this size
3"	1" x 7"	1 1/2"	2 3/4"	1 1/2"
6"	1 1/2" X 11"	2 1/2"	4 1/8"	2 1/2"
9"	2" X 15"	3 1/2"	5 3/4"	3 1/2"
12"	2 1/2" X 19"	4 1/2"	7 1/4"	4 1/2"

Instructions to make Churn Dash Quilt Block

Note: All seams are sewn using 1/4 inch seam allowance.

1. Begin by making 4 half square triangles. Select the two squares of fabric for the HST's. With right sides together, sew along all four edges. Cut the square diagonally, from each corner to the opposite corner to create 4 HST's. Press open with seam toward the darker side. Trim to desired size.
2. Now make the strip blocks. With right sides together, sew the strips together along one long edge. Press seam toward the darker fabric. Cut strip to desired block size. There will be four of these blocks.
3. Lay out the pieces to form the churn dash pattern. The HST's go in each corner. The strip blocks on each side. The darker half of each block should point toward the middle, with the solid square in the center.
4. Sew each row together. Press the seams of the top and bottom toward the middle. Press the seams of the center row away from the middle.
5. Sew each of the rows together and press flat.

For full details visit:

<http://www.adventuresofadiymom.com/2020/05/churn-dash-quilt-block.html>

For 4 at a time Half Square Triangle tutorial visit:

<https://www.adventuresofadiymom.com/2020/05/half-square-triangles-4-at-time.html>

©2020 Adventures of a DIY Mom For personal use only.

Garden Patch

