

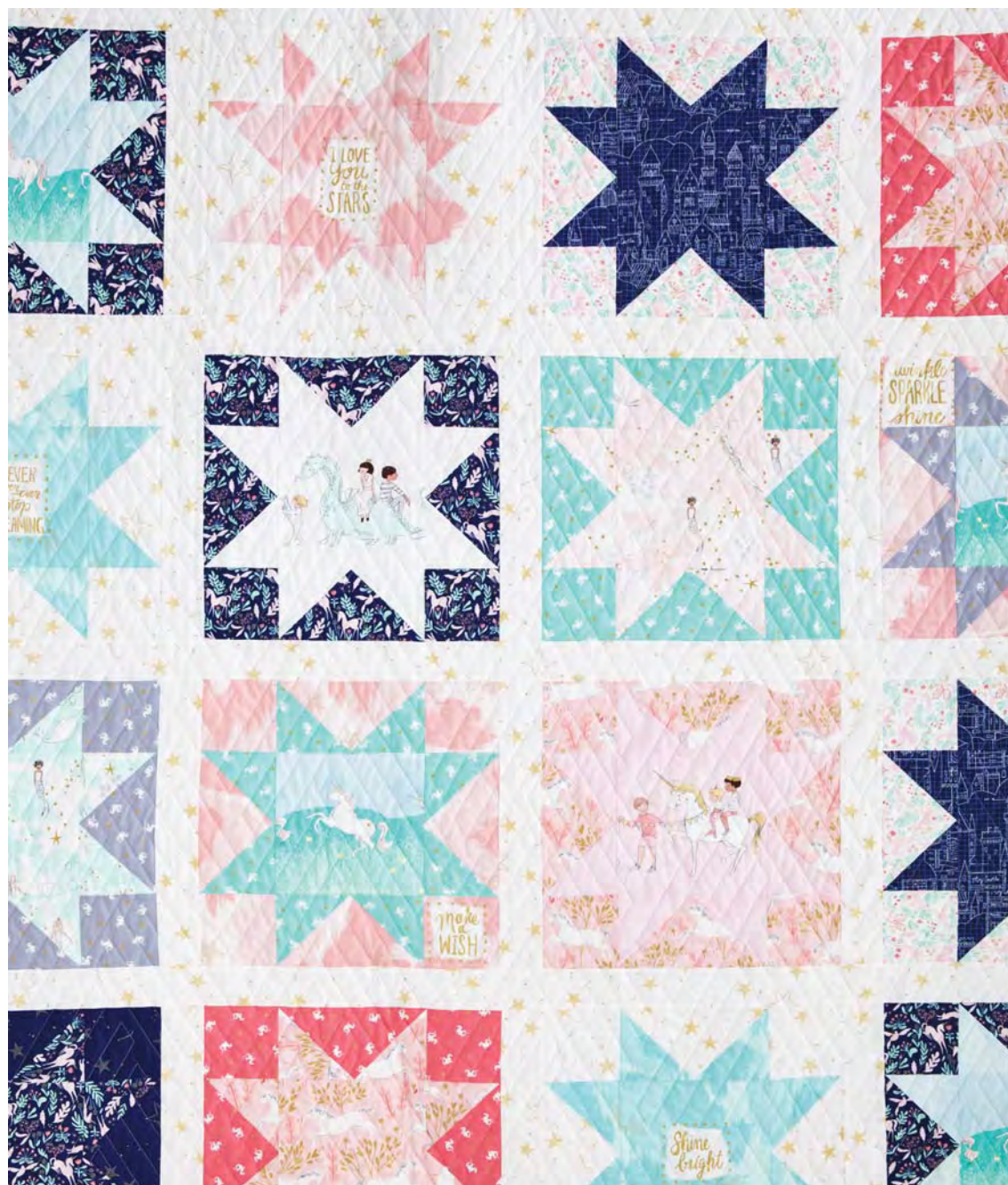
# MAGIC STARS QUILT



Finished Size: 74" W x 90 " H | Pattern Designed by Sarah Jane



# YARDAGE



MD7194-WHIT-D

**3 yards**

Background, Border, and  
Sashing



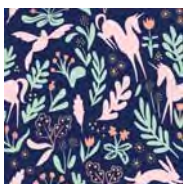
MD7191-AQUA-D

**5 1/3 yard**  
Backing



MD7191-BLOS-D

**1/2 yard**  
Star Blocks



MD7190-NAVY-D

**1/2 yard**  
Star Blocks



MD7188-BLOS-D

**1/2 yard \***  
Star Blocks



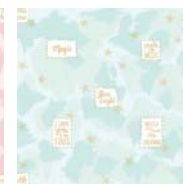
MD7188-WHIT-D

**1/2 yard \***  
Star Blocks



MD7193-PINK-D

**1/2 yard \***  
Star Blocks



MD7193-TURQ-D

**1/2 yard \***  
Star Blocks



MD7189-MINT-D

**3/4 yard \***  
Star Blocks



MD7197-TURQ-D

**7/8 yard**  
Blocks and Binding



DC7196-NAVY-D

**1/4 yard**  
Star Blocks



MD7197-GRAY-D

**1/4 yard**  
Star Blocks



MD7197-PINK-D

**1/4 yard**  
Star Blocks



MD7192-MIST-D

**1/4 yard**  
Star Blocks



MD7194-NAVY-D

**1/4 yard**  
Star Blocks



MD7192-BLOS-D

**1/4 yard**  
Star Blocks



MD7190-WHIT-D

**1/4 yard**  
Star Blocks

\*Added in extra to account for fussing cutting the prints.



# Magic Stars Quilt

Finished quilt size: 74" x 90"

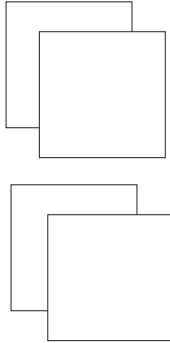
Finished Block measures 14"

## Cutting Instructions per block:

From **Star** Fabric Cut:

1 square 7 1/2" x 7 1/2"

4 squares 4 3/8" x 4 3/8"



From **Background** Fabric Cut:

1 square 8 1/4" x 8 1/4"

4 squares 4" x 4"



From **Sashing** Fabric Cut:

16 strips 2 1/2" by WOF

Subcut 8 of the 2 1/2" strips  
into 15 - 2 1/2" x 14 1/2"

From **Border** Fabric Cut:

8 strips 6 1/2" by WOF

From **Binding** Fabric Cut:

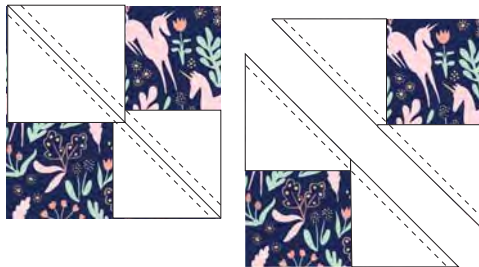
9 strips 2 1/4" by WOF



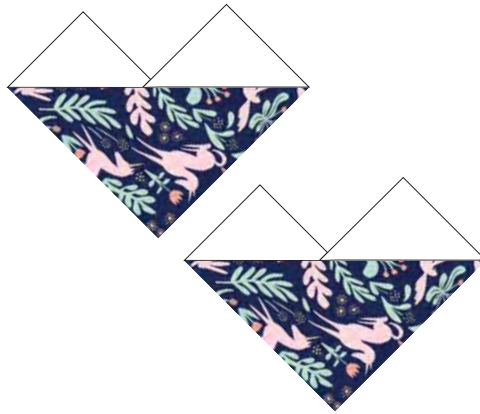
## Block Assembly:

Following are instructions to make one magic star quilt block:

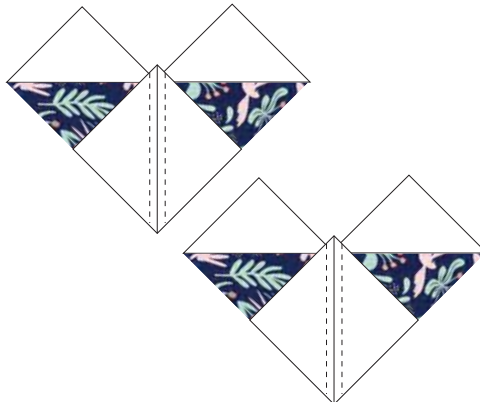
Draw a line on the wrong side of all the 4 3/8" x 4 3/8" squares. Lay two of those squares corner to corner (they will overlap in the center) on the 8 1/4" x 8 1/4" background fabric. Sew 1/4" on each side of the line. Cut on marked line.



Press seams open as shown below



Lay final two 4 3/8" x 4 3/8" squares on bottom corner of flying geese units. Sew 1/4" on each side of line. Cut on marked line.



Press seams open as shown below:



Flying geese units will measure 4" x 7 1/2"

Using the rest of the Star Block pieces. Assemble block as follows:



Make **20** Magic Star blocks.

## Quilt Assembly:

Layout blocks 4 across and 5 down. Sew 2 1/2" x 14 1/2" sashing strips between each block.

Sew sashing between each row.

Sew Rows together.

Add 6 1/2" border onto quilt.

Quilt and Bind as desired.

Quilt designed by: Sarah Jane of

**Sarah Jane Studios**

Pattern written by: Kaitlyn Pallas of

**Knot and Thread Design**