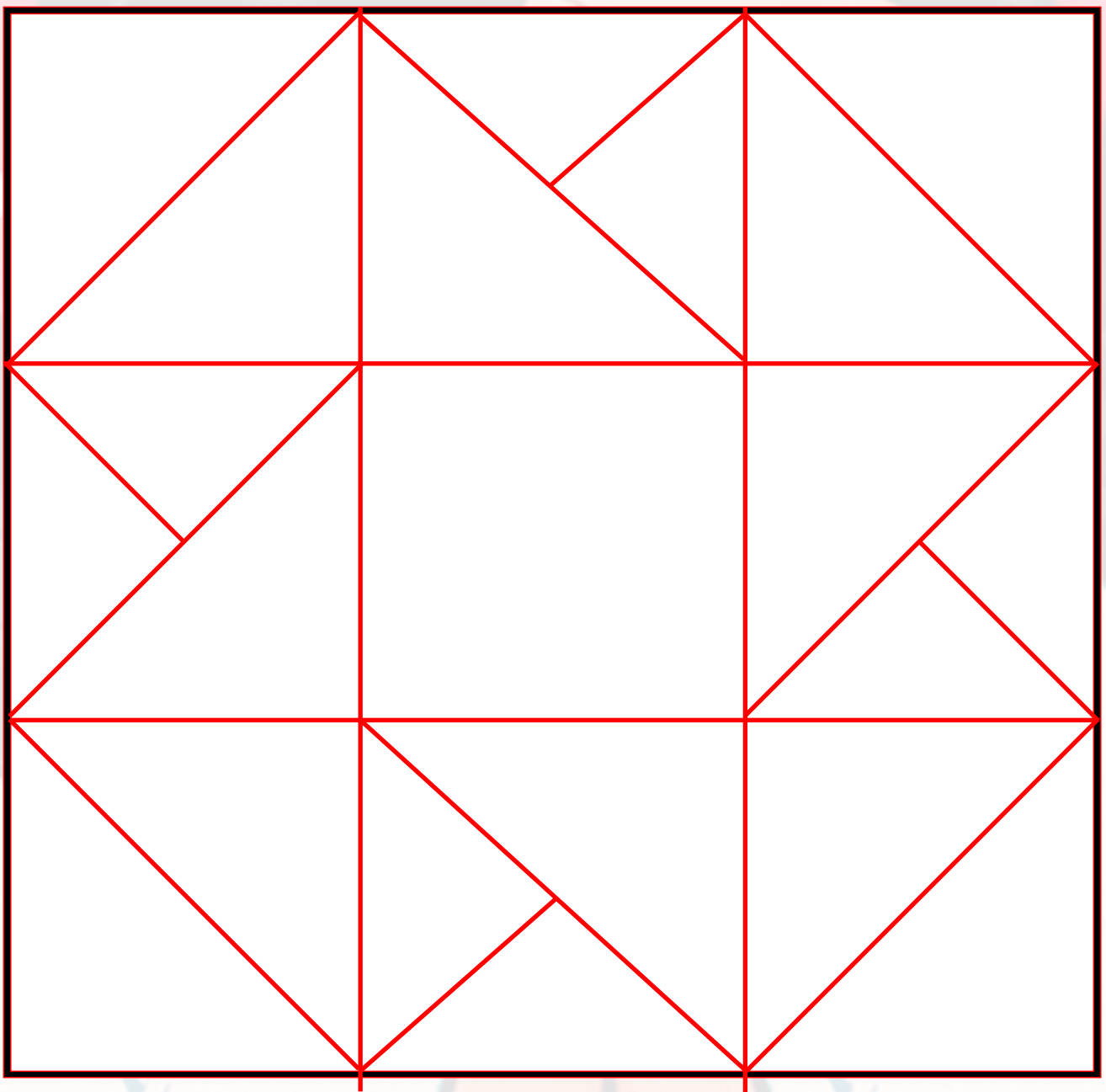


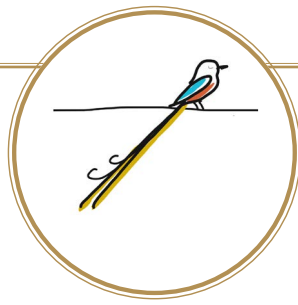


This template was designed by the quiltinstructions.com team
If using it for a blog please link to our website quiltinstructions.com

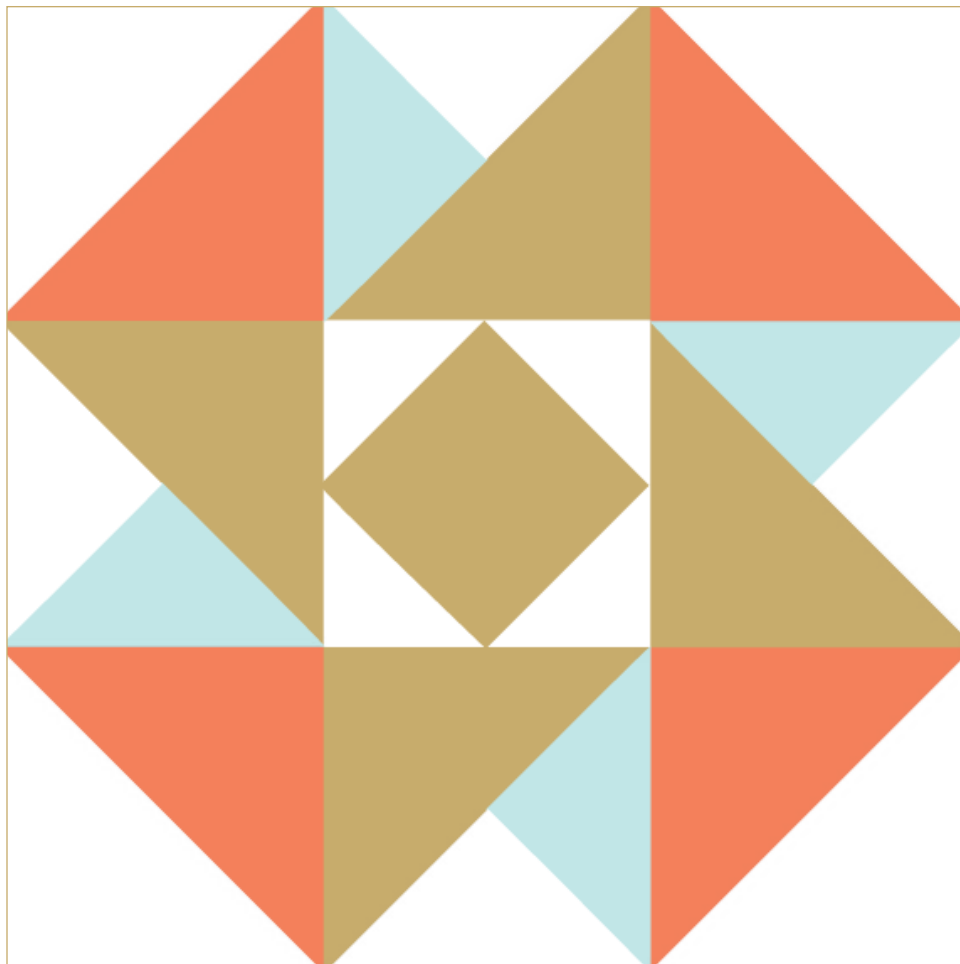
Air Castle Quilt Block



Rights of use reserved to quiltinstructions.com.
When using the PDF on your blog/site please link the article to the PDF.



The Air Castle Quilt Block Pattern (in 5 different sizes)



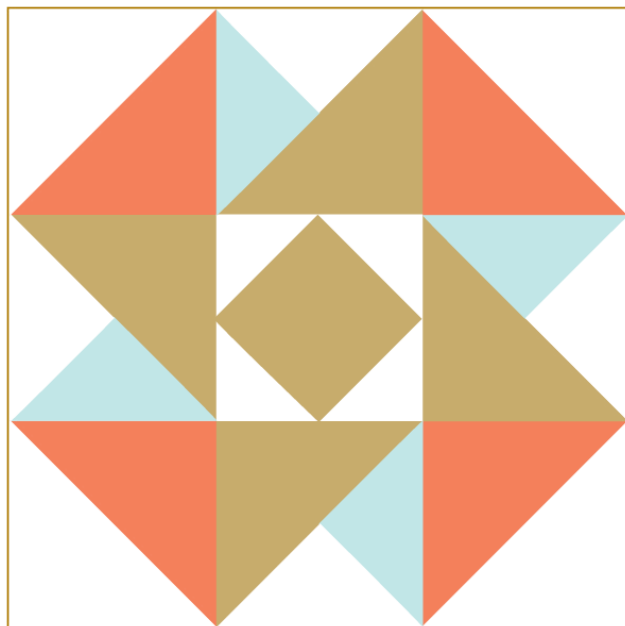
Skill level: Intermediate

brought to you by

The Scissortail Quilting Company

www.scissortailquilting.com

Air Castle Quilt Block Pattern



You will need 4 fabrics ranging from very light to dark.



Use the chart below to determine what size to cut your patchwork pieces. For example, if you want a 6" block, you would use the measurements given in the highlighted column below. The chart may also indicate that some of your squares may need to be subcut either once or twice on the diagonal.

To view more Quilt Block Patterns like this one, visit <https://scissortailquilting.com/Quilt-Block-Library/>

Cutting Chart:

Patch Shape		Subcut?	FINISHED SIZE				
			6"	9"	10"	12"	15"
Cut 2 (for HSTs)			2 7/8"	3 7/8"	4 1/4"	4 7/8"	5 7/8"
Cut 1 (for QSTs)			3 1/4"	4 1/4"	4 5/8"	5 1/4"	6 1/4"
Cut 4 (for SNS Unit)		No	1.5"	2"	2 1/4"	2 1/2"	3"
Cut 1 (for QSTs)			3 1/4"	4 1/4"	4 5/8"	5 1/4"	6 1/4"
Cut 1 (for SNS unit)		No	2 1/2"	3 1/2"	3 7/8"	4 1/2"	5 1/2"
Cut 2 (for HSTs)			2 7/8"	3 7/8"	4 1/4"	4 7/8"	5 7/8"
Cut 2 (for HSTs)			2 7/8"	3 7/8"	4 1/4"	4 7/8"	5 7/8"

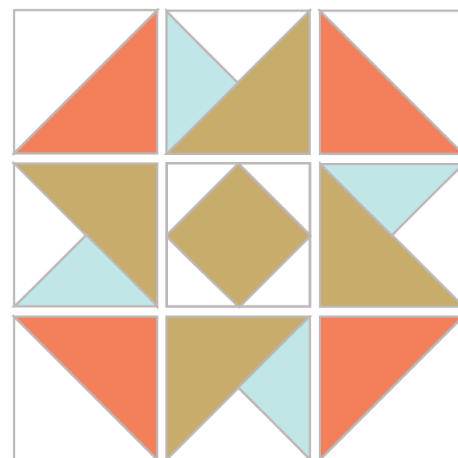
Sewing Instructions:

NOTE: For all seams, you should use a scant 1/4" seam and a 2.0 mm stitch length. Your unfinished block should measure 1/2" more than the finished size you are making.

Arrange your patches as shown in the diagram at right.

First make the 4 HST (Half Square Triangle) units that go in each corner. Next, make the SNS unit that goes in the center, using the Quick Corner Method. Third, make the 4 Y-units that go on each side of the Center SNS unit.

Finally, in 9-patch fashion, sew square units together to make rows, then sew all rows together.



Air Castle



12" finished quilt block

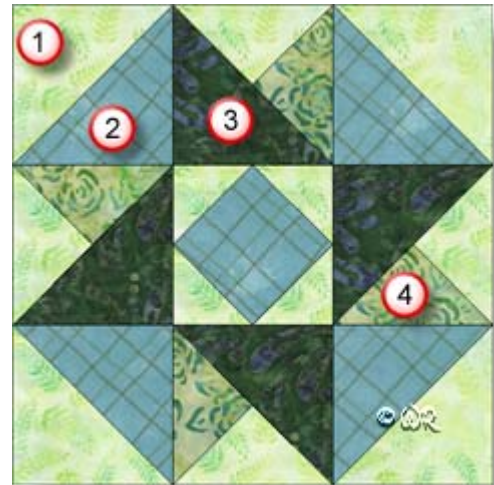
9" finished quilt block

6" finished quilt block

Air Castle

12" finished quilt block

Fabric Placement



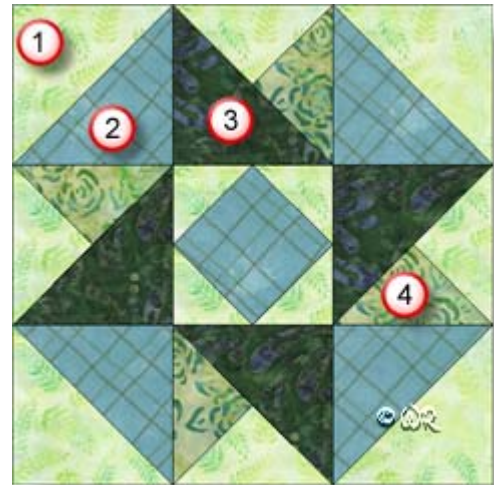
How-to Notes	
	Bisect square on one diagonal
	Bisect square on both diagonals
*All seam allowances are 1/4" unless noted otherwise	

1		Background fabric 1 Cut 2 squares 4 7/8" and bisect on one diagonal Cut 2 squares 2 7/8" and bisect on one diagonal Cut 1 square 5 1/4" and bisect on both diagonals
2		Fabric 2 Cut 1 square 3 3/8" for centre Cut 2 squares 4 7/8" and bisect on one diagonal
3		Fabric 3 Cut 2 squares 4 7/8" and bisect on one diagonal
4		Fabric 4 Cut 1 square 5 1/4" and bisect on both diagonals

Air Castle

9" finished quilt block

Fabric Placement



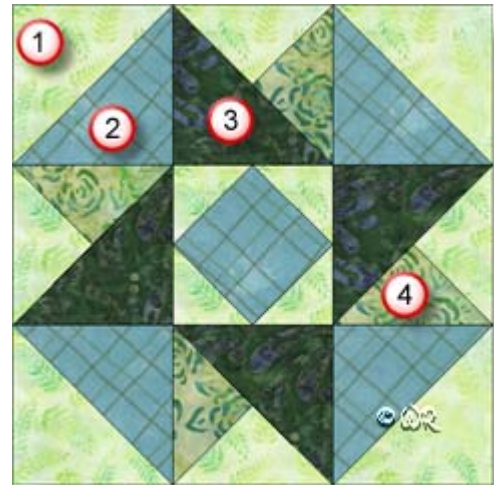
How-to Notes	
	Bisect square on one diagonal
	Bisect square on both diagonals
*All seam allowances are 1/4" unless noted otherwise	

1		Background fabric 1 Cut 2 squares 3 7/8" and bisect on one diagonal Cut 2 squares 2 3/8" and bisect on one diagonal Cut 1 square 4 1/4" and bisect on both diagonals
2		Fabric 2 Cut 1 square 2 5/8" for centre Cut 2 squares 3 7/8" and bisect on one diagonal
3		Fabric 3 Cut 2 squares 3 7/8" and bisect on one diagonal
4		Fabric 4 Cut 1 square 4 1/4" and bisect on both diagonals

Air Castle

6" finished quilt block

Fabric Placement



How-to Notes	
	Bisect square on one diagonal
	Bisect square on both diagonals
*All seam allowances are 1/4" unless noted otherwise	

1		Background fabric 1 Cut 2 squares 2 7/8" and bisect on one diagonal Cut 2 squares 1 7/8" and bisect on one diagonal Cut 1 square 3 1/4" and bisect on both diagonals
2		Fabric 2 Cut 1 square 1-15/16" for centre Cut 2 squares 2 7/8" and bisect on one diagonal
3		Fabric 3 Cut 2 squares 2 7/8" and bisect on one diagonal
4		Fabric 4 Cut 1 square 3 1/4" and bisect on both diagonals

Air Castle



Make 4



Make 4



Make 1

