

Yesterday

Featuring Hello Love by Heather Bailey

Show your love for the '60s with this Heart quilt featuring some of the Beatles greatest hits.

Collection: Hello Love by Heather Bailey

Technique: Piecing, Quilting

Skill Level: Advanced Beginner

Crafting Time: Weekend*

Finished Size: Finished Size of Quilt:
44³/₄" x 57¹/₄" (113.67cm x 145.42cm)
Finished Size of Block:
11¹/₂" (29.21cm) square

*Crafting time based on Advanced Beginner skill level

Project designed by Heather Bailey and Kerri Thomson

Tech edited by Elizabeth Beese

Fabric Requirements

DESIGN	COLOR	ARTICLE CODE	YARDAGE
(A) Octopus's Garden	Midnight	PWHB081.MIDNI	½ yard (45.72cm)
(B) Twist and Shout	Blue	PWHB079.BLUEX	¼ yard (22.86cm)
(C) Blackbird	Midnight	PWHB076.MIDNI	¼ yard (22.86cm)
(D) Get Back	Blue	PWHB077.BLUEX	½ yard (45.72cm)
(E) Fields Forever	Midnight	PWHB078.MIDNI	½ yard (45.72cm)
(F) Guru	Blue	PWHB082.BLUEX	¼ yard (22.86cm)
(G) Norwegian Wood	Midnight	PWHB075.MIDNI	¾ yard (68.58cm)
(H) Get Back	Cream	PWHB077.CREAM	1 yard (.91m)
(I) Pop Star	Yellow	PWHB080.YELLO	⅝ yard (57.15cm)
(J) Twist and Shout	Red	PWHB079.REDXX	⅔ yard (60.96cm)*

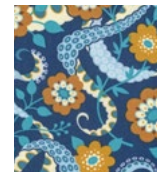
* includes binding

Backing (Purchased Separately)

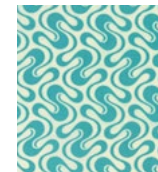
44" (111.76cm)			
Guru	Blue	PWHB082.BLUEX	3 yards (2.74m)

Additional Requirements

- Coats Dual Duty XP® Thread in colors to match fabrics
- Sewing Machine
- Quilt Batting, 53" x 66" (134.62cm x 167.64cm)
- Rotary cutter, ruler, and mat
- Basic sewing and pressing supplies



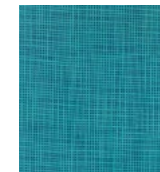
(A)



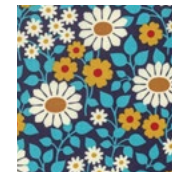
(B)



(C)



(D)



(E)



(F)



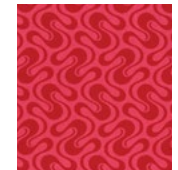
(G)



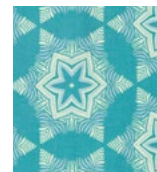
(H)



(I)



(J)



Backing
44"
(111.76cm)

Cutting

WOF = width of fabric

Fabrics A and E, cut from each:

(2) $6\frac{1}{4}$ " x WOF (15.88cm x WOF);
sub-cut (8) $6\frac{1}{4}$ " (15.88cm) squares

Fabrics B and F, cut from each:

(1) $6\frac{1}{4}$ " x WOF (15.88cm x WOF);
sub-cut (6) $6\frac{1}{4}$ " (15.88cm) squares

Fabric C, cut:

(1) $6\frac{1}{4}$ " x WOF (15.88cm x WOF);
sub-cut (4) $6\frac{1}{4}$ " (15.88cm) squares

Fabric D, cut:

(2) $6\frac{1}{4}$ " x WOF (15.88cm x WOF);
sub-cut (12) $6\frac{1}{4}$ " (15.88cm) squares

Fabric G, cut: (Extra fabric was allowed to center designs on the borders.)

(6) 3 " x WOF (7.62cm x WOF) for Border 3
(1) $6\frac{1}{4}$ " x WOF (15.88cm x WOF);
sub-cut (4) $6\frac{1}{4}$ " (15.88cm) squares

Fabric H, cut:

(4) $6\frac{1}{4}$ " x WOF (15.88cm x WOF);
sub-cut (24) $6\frac{1}{4}$ " (15.88cm) squares
(3) $2\frac{3}{8}$ " x WOF (6.03cm x WOF);
sub-cut (48) $2\frac{3}{8}$ " (6.03cm) squares

Fabric I, cut:

(6) $1\frac{1}{2}$ " x WOF (3.81cm x WOF);
sub-cut (3) $1\frac{1}{2}$ " x 37 " (3.81cm x 93.98cm) rectangles and
(8) $1\frac{1}{2}$ " x 12 " (3.81cm x 30.48cm) rectangles for sashing
(5) $1\frac{1}{2}$ " x WOF (3.81cm x WOF) for Border 1

Fabric J, cut:

(5) $1\frac{1}{8}$ " x WOF (2.86cm x WOF) for Border 2
(6) $2\frac{1}{2}$ " x WOF (6.35cm x WOF) for binding

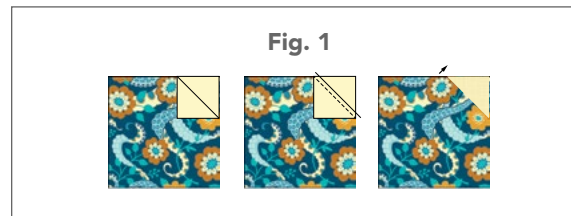
Backing Fabric, cut:

(2) 53 " x WOF (134.62cm x WOF)

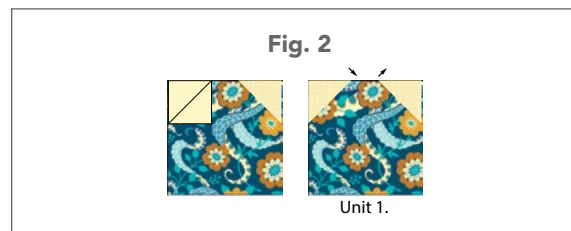
Sewing Instructions

Note: All seam allowances are $\frac{1}{4}$ " (.64cm) unless otherwise noted. Sew pieces right sides together.

1. Draw a line along one diagonal on the wrong side of the (48) $2\frac{3}{8}$ " (6.03cm) **Fabric H** squares.
2. Place a $2\frac{3}{8}$ " (6.03cm) **Fabric H** square onto the top right corner of a $6\frac{1}{4}$ " (15.88cm) **Fabric A** square, right sides together, with the diagonal line going across the corner (**Fig. 1**); pin. Sew along the drawn line, trim the seam allowance above the stitching to $\frac{1}{4}$ " (.64cm) and press the seam toward **Fabric H**.



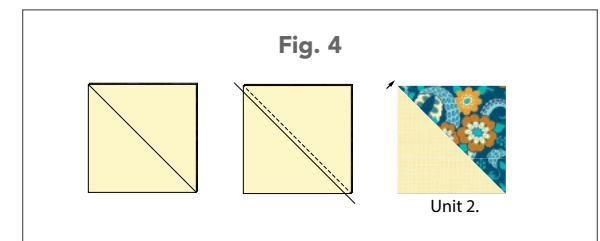
3. Repeat Step 2 to sew a $2\frac{3}{8}$ " (6.03cm) **Fabric H** square to the top left corner of the $6\frac{1}{4}$ " (15.88cm) **Fabric A** square, pressing the seam toward **Fabric A**, to make a **Fabric A** Unit 1 (**Fig. 2**).



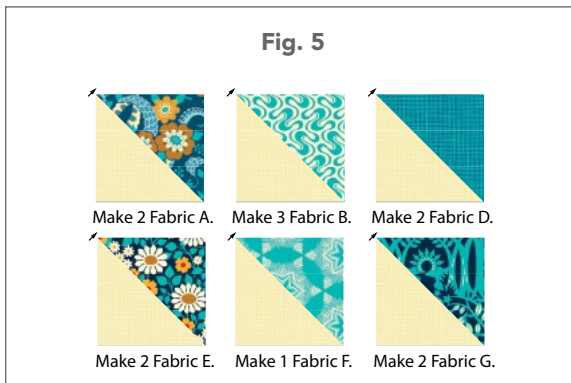
4. Repeat Steps 2 and 3 to make a total of (4) **Fabric A** Unit 1, (3) **Fabric B** Unit 1, (2) **Fabric C** Unit 1, (6) **Fabric D** Unit 1, (4) **Fabric E** Unit 1, (3) **Fabric F** Unit 1, and (2) **Fabric G** Unit 1 (**Fig. 3**).



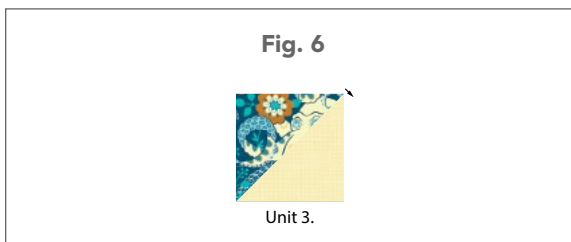
5. Draw a line along one diagonal on the wrong side of the (24) $6\frac{1}{4}$ " (15.88cm) **Fabric H** squares.
6. Place a $6\frac{1}{4}$ " (15.88cm) **Fabric H** square and $6\frac{1}{4}$ " (15.88cm) **Fabric A** square right sides together with the **Fabric A** print running up and down and the **Fabric H** drawn line running from the top left to bottom right; pin. Sew along the drawn line and trim the seam allowance below the stitching to $\frac{1}{4}$ " (.64cm). Press the seam toward **Fabric A** to make a **Fabric A** Unit 2 (**Fig. 4**).



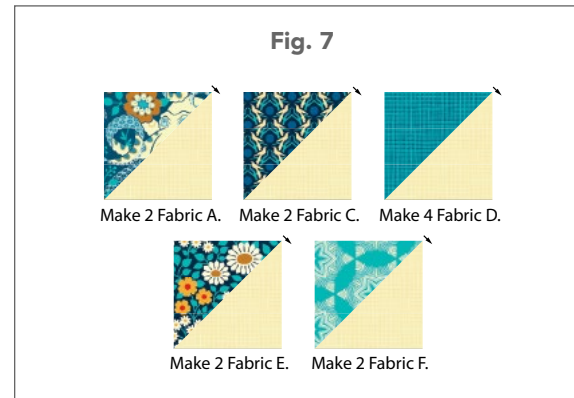
7. Repeat Step 6 to make a total of (2) **Fabric A** Unit 2, (3) **Fabric B** Unit 2, (2) **Fabric D** Unit 2, (2) **Fabric E** Unit 2, (1) **Fabric F** Unit 2, and (2) **Fabric G** Unit 2 (**Fig. 5**).



8. Place a 6¼" (15.88cm) **Fabric H** square and 6¼" (15.88cm) **Fabric A** square right sides together with the **Fabric A** print running up and down and the **Fabric H** drawn line running from the bottom left to top right; pin. Sew along the drawn line and trim the seam allowance below the stitching to ¼" (.64cm). Press the seam toward **Fabric H** to make a **Fabric A** Unit 3 (**Fig. 6**).

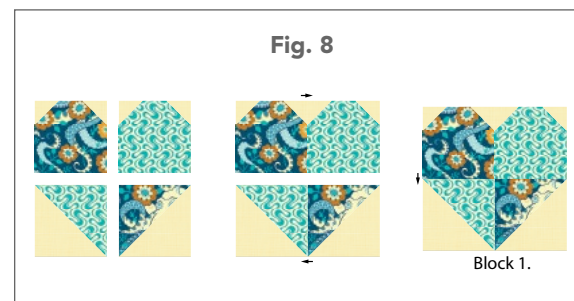


9. Repeat Step 8 to make a total of (2) **Fabric A** Unit 3, (2) **Fabric C** Unit 3, (4) **Fabric D** Unit 3, (2) **Fabric E** Unit 3, and (2) **Fabric F** Unit 3 (**Fig. 7**).

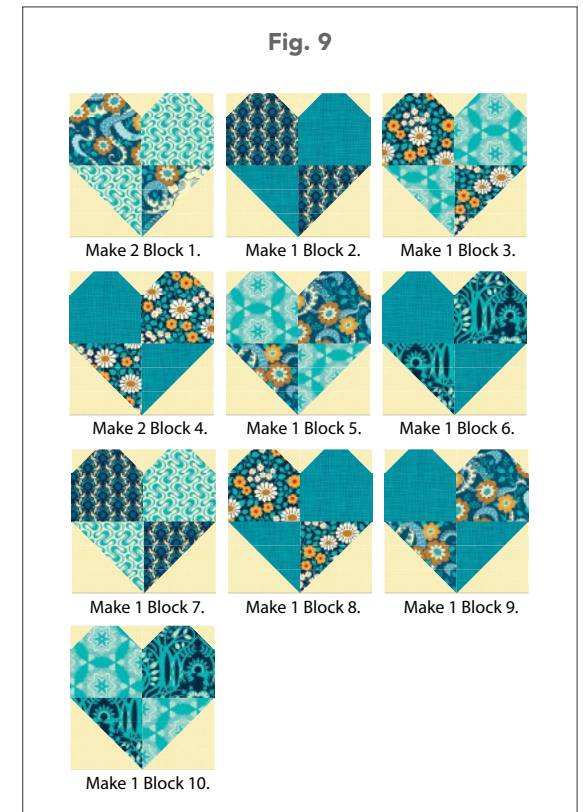


Block Assembly

10. Lay out one each of **Fabric A** Unit 1, **Fabric B** Unit 1, **Fabric B** Unit 2, and **Fabric A** Unit 3 in pairs (**Fig. 8**). Sew units together in pairs; press the seams in opposite directions. Sew the pairs together to make Block 1.



11. Repeat Step 10 to make a total of (2) Block 1, (1) Block 2, (1) Block 3, (2) Block 4, (1) Block 5, (1) Block 6, (1) Block 7, (1) Block 8, (1) Block 9, and (1) Block 10 (**Fig. 9**).



Quilt Top Assembly

Note: Follow the **Quilt Layout** on page 6 while assembling the quilt top.

12. Lay out blocks 1–10 and 1½" x 12" (3.81cm x 30.48cm) **Fabric I** sashing rectangles in four rows. Sew together pieces in each row. Press the seam allowances toward the sashing.
13. Sew together Rows 1–4 and (3) 1½" x 37" (3.81cm x 93.98cm) **Fabric I** sashing strips as shown to complete the Quilt Center. Press the seam allowances toward the sashing.
14. Remove the selvages and sew (3) 1½" (3.81cm) **Fabric I** Border 1 strips together along the 1½" (3.8cm) edges into one strip. Cut (2) 1½" x 49½" (3.81cm x 125.73cm) Side Borders. From the remaining (2) 1½" (3.81cm) **Fabric I** Border 1 strips cut (2) 1½" x 39" (3.81cm x 99.06cm) Top/Bottom Borders. Sew the **Fabric I** Side borders to the sides of the quilt center, and then add the **Fabric I** Top/Bottom Borders.
15. Remove the selvages and sew (3) 1½" (2.86cm) **Fabric J** Border 2 strips together along the 1½" (2.86cm) edges into one strip. Cut (2) 1½" x 51½" (2.86cm x 130.81cm) Side Borders. From the remaining (2) 1½" (2.86cm) **Fabric J** Border 2 strips cut (2) 1½" x 40¼" (2.86cm x 102.24cm) Top/Bottom Borders. Sew the **Fabric J** Side borders to the sides of the quilt center, and then add the **Fabric J** Top/Bottom Borders.
16. Remove the selvages and sew (6) 3" (7.62cm) **Fabric G** Border 3 strips together along the 3" (7.62cm) edges into one strip. Cut (2) 3" x 52¾" (7.62cm x 133.99cm) Side Borders and (2) 3" x 45¼" (7.62cm x 114.94cm) Top/Bottom Borders. Sew the **Fabric G** Side borders to the sides of the quilt center, and then add the **Fabric G** Top/Bottom Borders to complete the Quilt Top.

Finishing

17. Remove the selvages from the (2) 53" (134.62cm) lengths of backing fabric, and sew them together on one long edge. Trim to measure 53" x 65" (134.62cm x 165.10cm).
18. Layer backing, batting and quilt top. Baste and quilt as desired. Trim excess batting and backing even with the quilt top.
19. Sew the (6) 2½" x WOF (6.35cm x WOF) **Fabric J** strips into one continuous binding strip. Press seams open. Press the strip in half lengthwise with wrong sides together.
20. Leaving an 8" (20.32cm) tail of binding, sew the binding to the top of the quilt through all layers with raw edges matching. Miter corners. Stop approximately 12" (30.48cm) from where you started. Lay both loose ends of binding flat along the quilt edge. Where the loose ends meet, fold them back on themselves and press to form a crease. Using this crease as your stitching line, sew the two open ends of the binding right sides together. Trim seam to ¼" (.64cm) and press open. Finish sewing binding to the quilt.
21. Turn binding to back of quilt and blind stitch in place.

Quilt Layout

