



I wanted to share the steps to making Cathy's Baskets.

This quilt is 35" square so it is the perfect size to hang on the wall or to become a table topper.

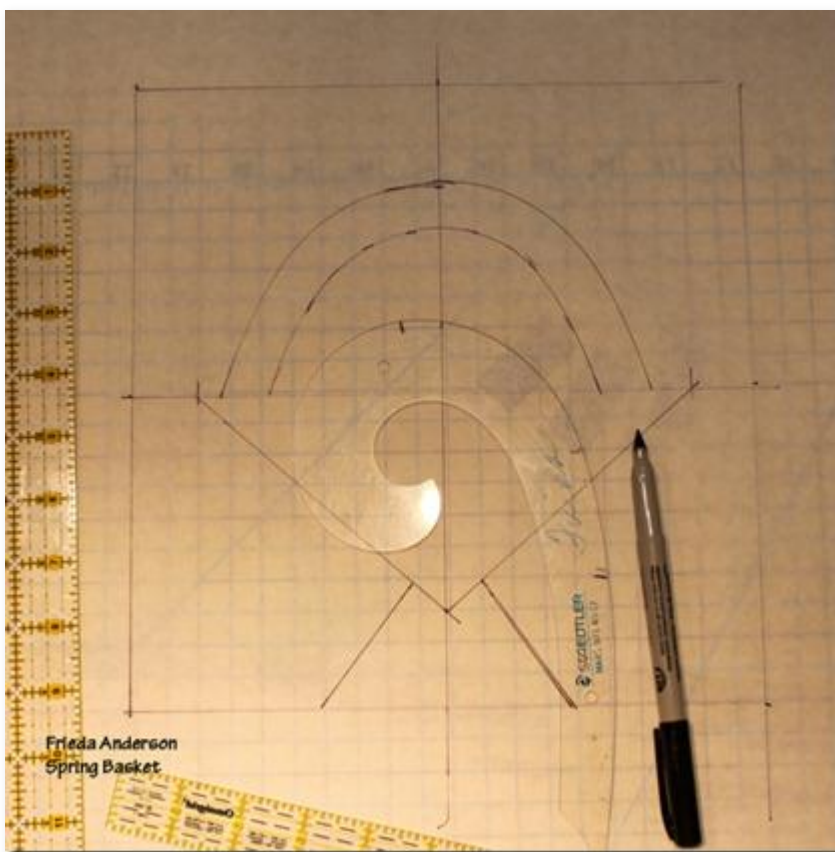
I made a 10" square pattern for my basket design from freezer paper.

I like working this way, it allows me freedom as well as guide lines to work from.

I find it is much easier to square things up after I have pieced them and if I start with a guide I get better results.

Supplies for this project are:

- 2 yards of gradation Raspberry fabric
- 1 yard of Limey Avocado fabric
- Freezer paper
- mechanical pencil
- glue stick
- 40" square piece of batting
- 1 yard of backing fabric
- Quilting thread of choice



I drew my pattern on the mat side of a piece of freezer paper.

- I marked out a 10" square and divided it in half in both directions.
- I marked my basket triangle on the bottom half leaving about an 1 1/2" from the bottom to add two triangles for the base. This can vary.
- I made sure I left between 1/5" – 1" from the edge of the square for the triangle basket.
- I cut out all the shapes right on the inside line to use as templates as I make the baskets.
- I left 1/2" on the outside as extra to be trimmed away later when I square up the blocks.

To get started:

I started by dividing up the Limey Avocado fabric into five strips.

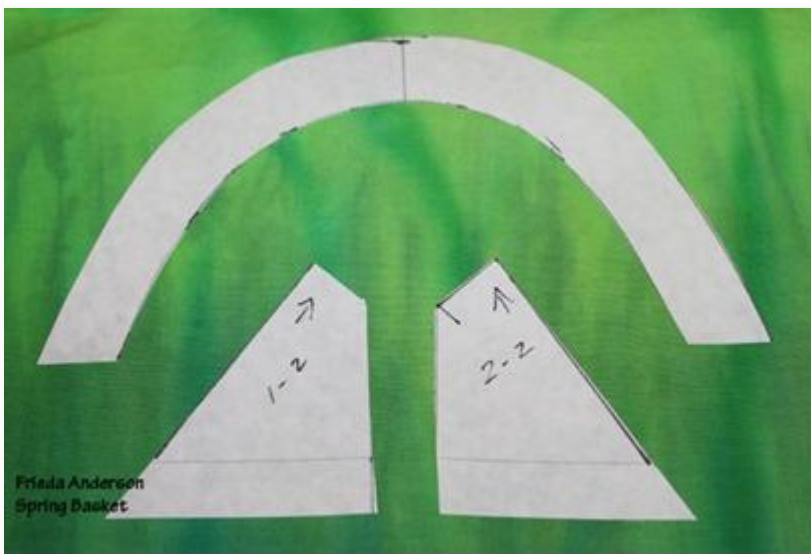
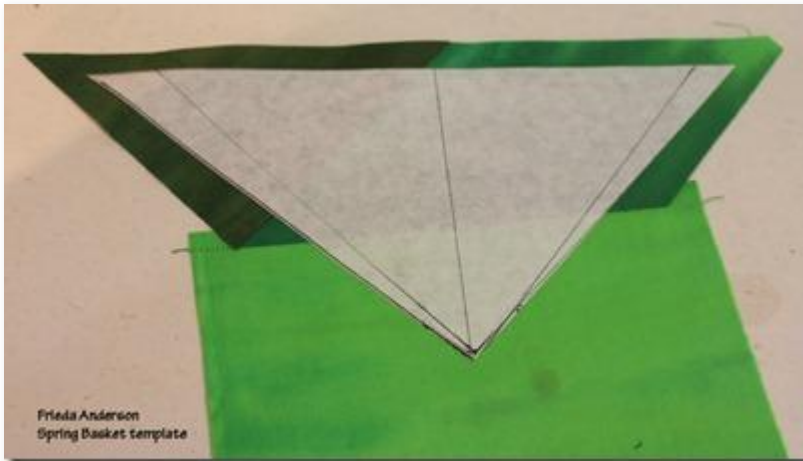
I just cut it apart where the fabric changed color.

This will become my baskets, handles and part of the stripy units on the border.



To Start:

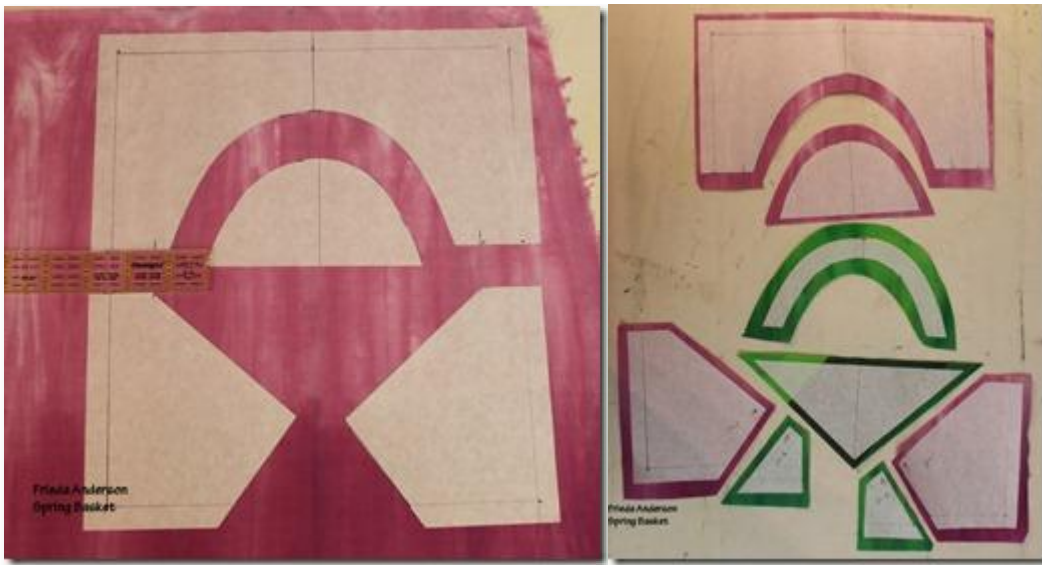
- Cut the green sections into 2-3" wide strips.
- Sew two strips of green together with a 1/4" seam.
- Cut each of these units randomly at an angle
- Add another piece of green to the random angle to create very scrappy looking basket pieces.
- Make 10 of these units.
- Cut out the base triangles from these units, allowing a 1/4" seam allowance all the way around the freezer paper shape.
  - Place the shiny side of the freezer paper against the front of the fabric and press with a hot dry iron.
  - Use a rotary cutter and ruler to cut around the paper pattern.



I used my dress makers curve to create a smooth arched handle on my freezer paper pattern.

- Cut out the exact shape of the handle from the freezer paper.
- Place the freezer paper template shiny side against the fabric and ironed it to the fabric.
  - Use these freezer paper templates over and over again for all the baskets.
- Cut out the rest of the basket templates from the freezer paper.
- Leave a 1/2" seam allowance around the outside edge of the drawing but cut exactly on the lines for the inside pattern shapes.



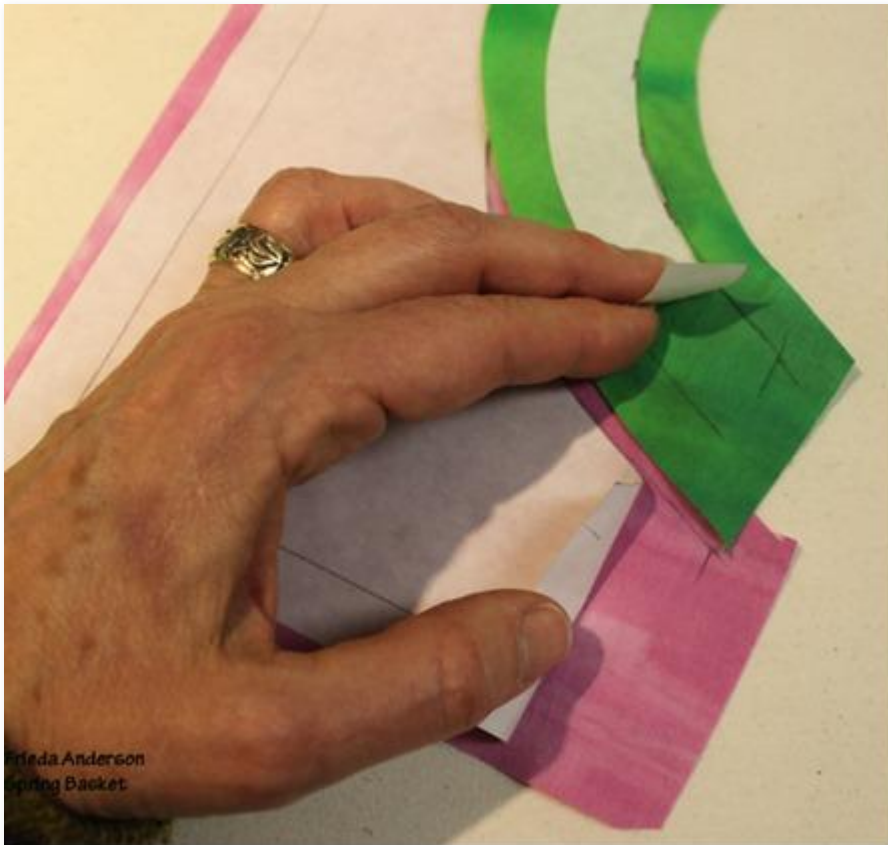


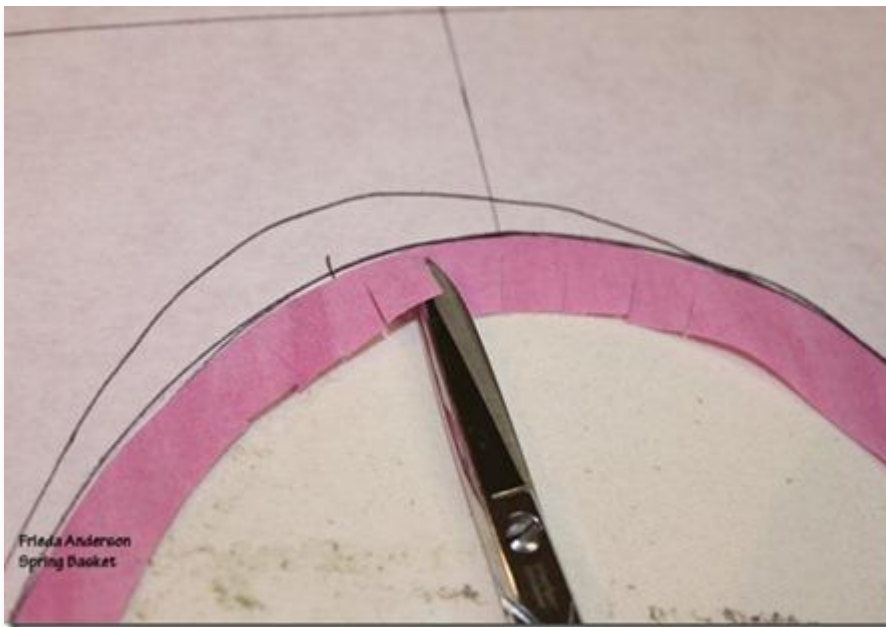
Place the freezer paper templates on the raspberry fabric.

*The Raspberry fabric grades from light to dark. I place my templates to utilize the gradation and work from the light end to the dark end as I create each row of three baskets.*

- For the top two templates that will create the area for the handle cut out leaving a 1/2" seam allowance on the inside and outside of each section.
- Cut out the inside curved areas using a rotary cutter. Leave a 1/2" seam allowance. You need a more than 1/4" seam to glue and sew these sections.
- Use a pencil and mark the inside curve right next to the paper on the top pink section and the bottom of the green handle. This is the pressed seamed line that will be your sewing line. I also mark the bottom edge of the pattern pieces to give me a guide when I go to trim up the bottom finished edge of this top unit.

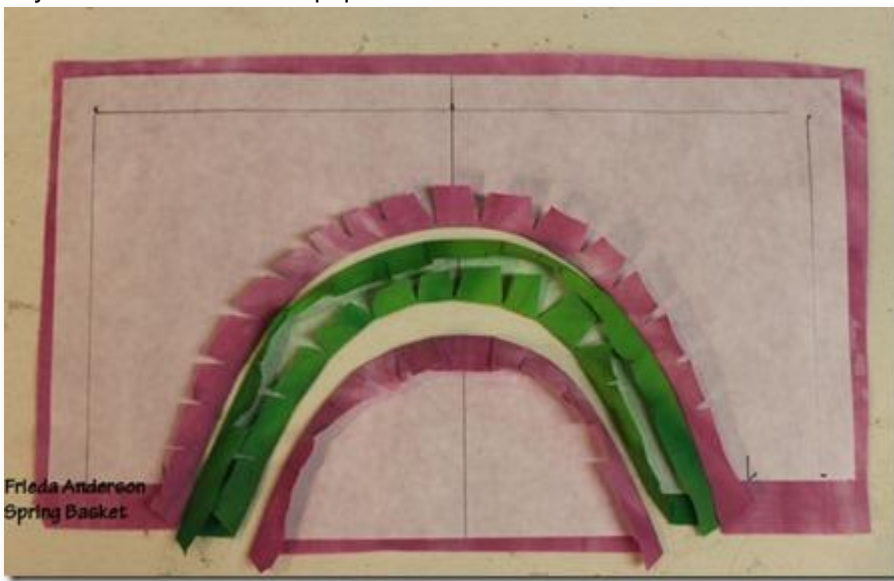
*I don't have to mark it with a pencil but I find it helps me see the line better when sewing the curve.*





*In order to glue all of the curved pieces together before sewing I clip all of the seam allowances about a 1/2" apart around the curve. Make sure not to go right to the edge of the paper when clipping.*

Finger press this seam back against the paper and finally press it with a hot dry iron. I don't glue any of these seams to the paper.

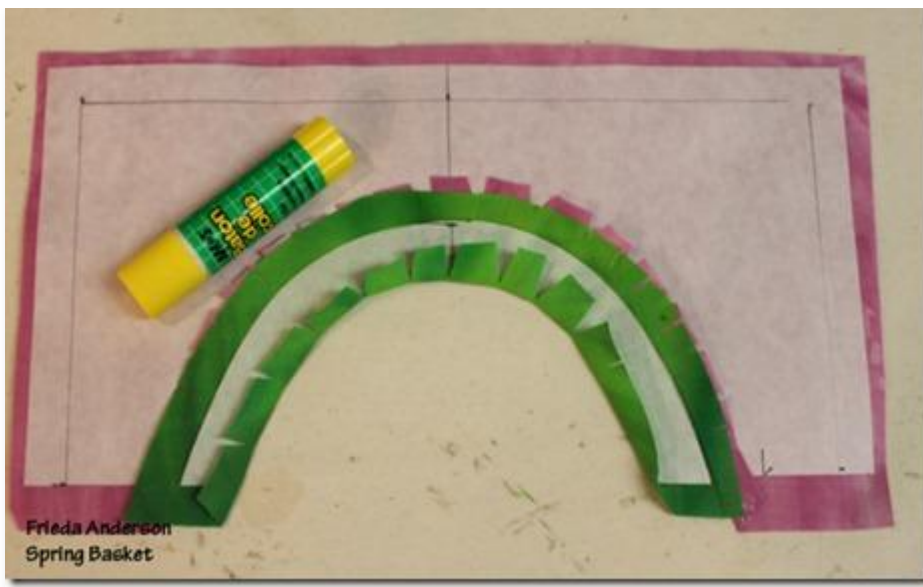


- Do this to all three pieces of the top of the basket section, the top, the handle and the bottom half circle under the handle.

I will clip and press all of the seam allowances of the curved areas against the paper templates.

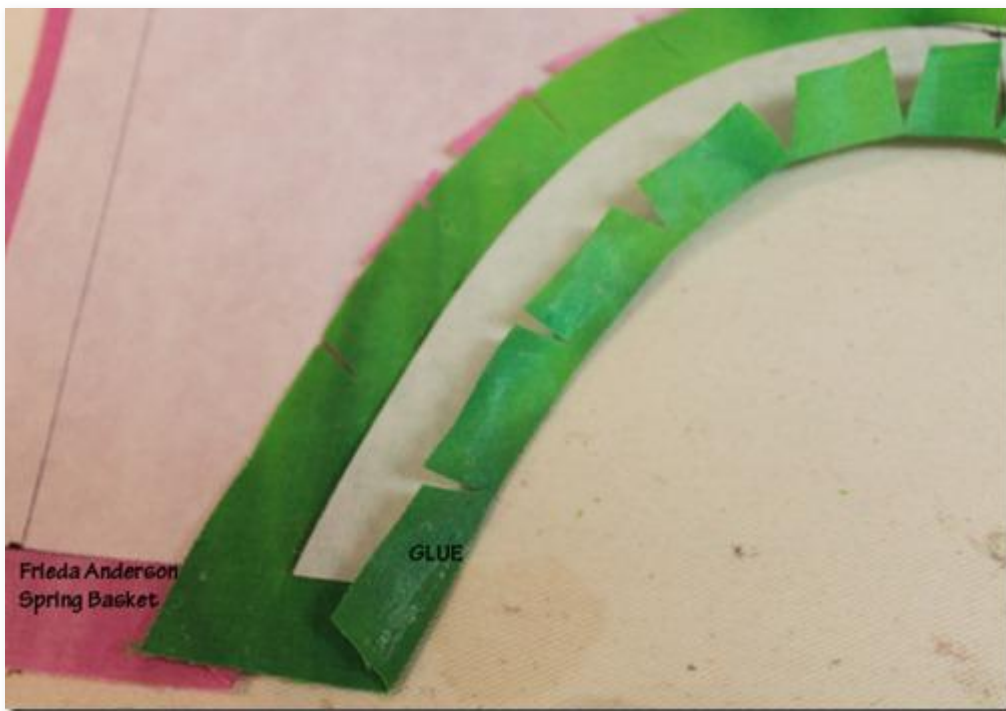
Notice that I drew a center line down the middle of the pattern so that when I go to alien all of my pieces I have a mark to guide me.

- Run the glue stick along the turned back edge of the top pink basket section seam (the edge facing you).



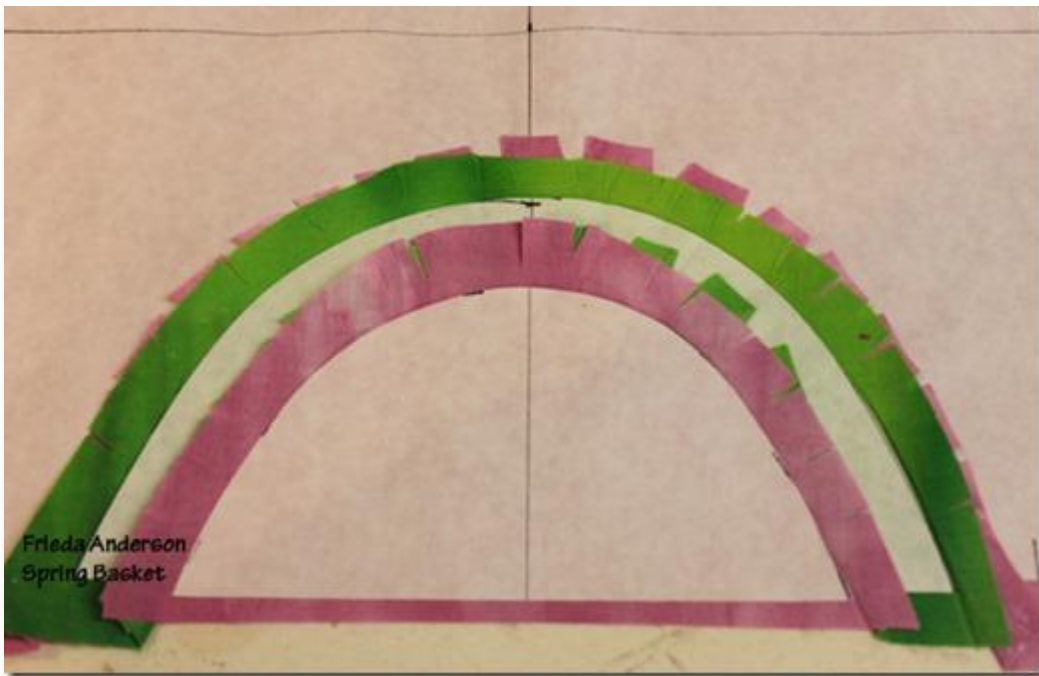
- Align the green handle piece snug right under the top pink section.
- Open up the top edge of the green handle piece and using a hot iron press this seam over the top of pink top section seam securing them together. *The glue will hold the pieces together for sewing.*

Do the same thing with the bottom pink 1/2 circle that completes the bottom of the top handle section.

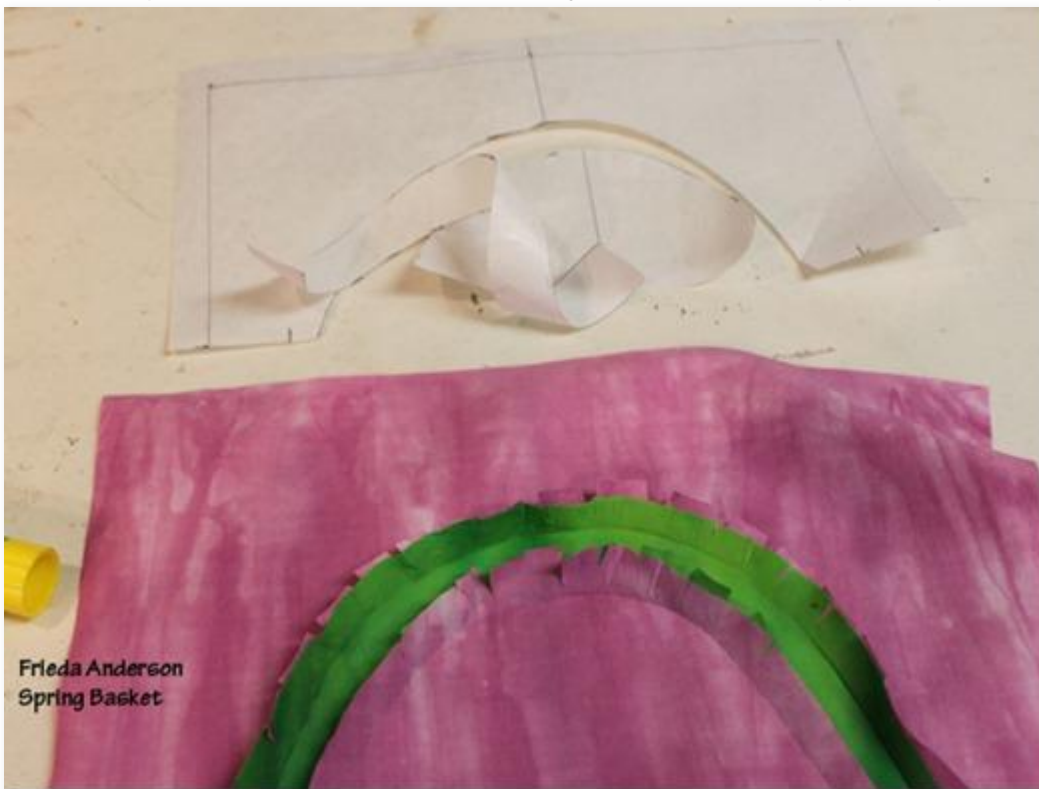


- Run the glue stick along the top of the turned back edge of the bottom of the green handle.
- Line up the pink circle under the green handle piece.
- Open up the pink pressed edge to lay over the top of the bottom of the pressed curve of the green handle .
- Press these two seams together using a hot dry iron
- This will secure the bottom pink section to the bottom of the green handle.



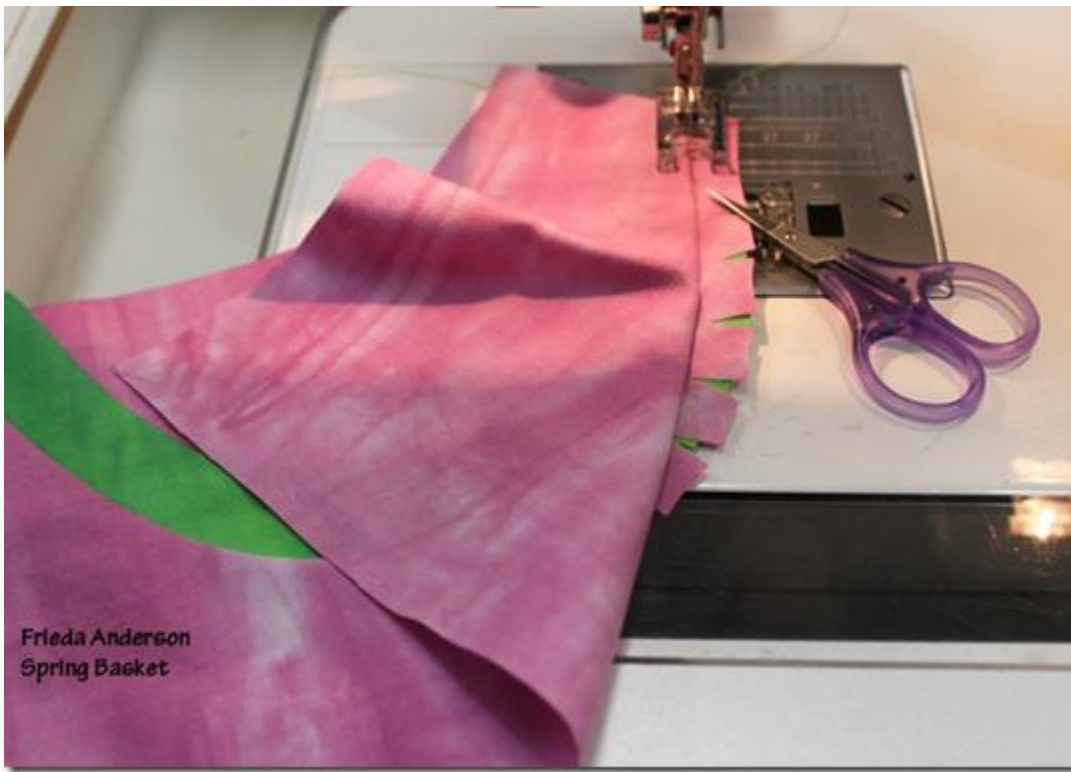


Once these pressed seams have cooled carefully remove the freezer paper templates.



*You can use these paper templates again on all the basket squares.*

- Sew these sections together placing the green handle section against the sewing bed and the top pink section up to see the pencil or fold line that you will sew on.
- Sew slowly and carefully along the fold mark or pencil line.



I use a small scissors to hold the edge on the right side while I open up and guide the left side with my hand.

- Once the curves are sewn make sure no tucks were create.



If there are any tucks correct them now.

Trim the 1/2" seam allowance to 1/4" and press both seams to the inside of the handle.





Notice on the bottom left I also marked with my pencil the bottom line of each pattern piece as a guide for when I trim this bottom edge up. I will trim leaving a 1/4" seam allowance.



I really like working with freezer paper and glue this way. I don't have to be so precise when I cut my pattern pieces and in the end when I trim it all up I still get very straight and clean lines. I'll show you the rest next time.