

Bear Paw block tutorial



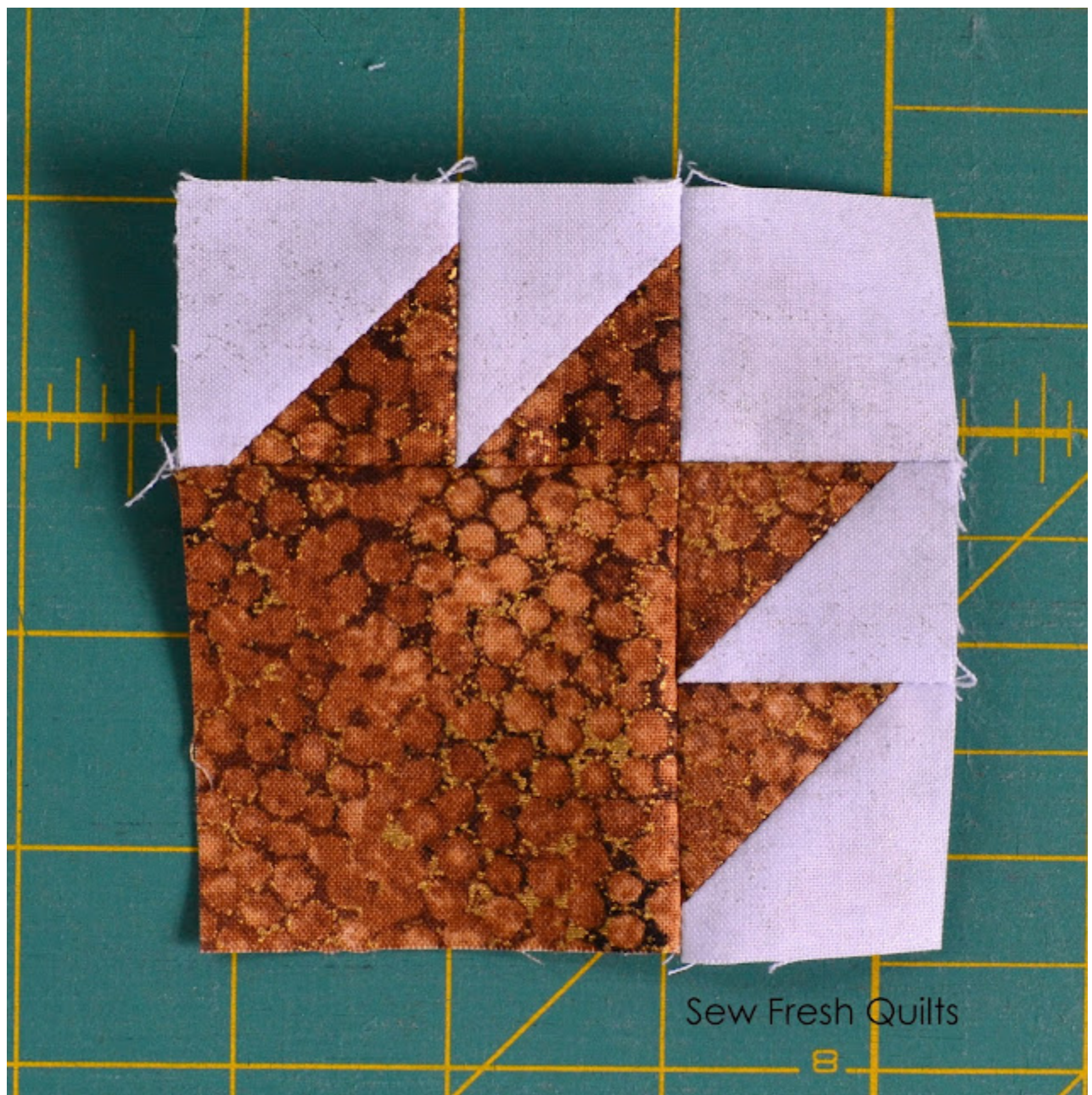
Since I have been spending the past couple of weeks working on the [Modernitional Bear Paw](#) quilt, I thought it would be nice to share a simple tutorial for making the Bear Paw quilt block.

In my ["Down on the Farm"](#) post from June 23rd, I shared photos of all the calves born in the past two weeks. And a progress pic of the 940 half square triangles required to finish Step #1 in the Modernitional Bear Paw queen size quilt.

Since then, along with the help of my new Oliso iron.....



I completed the 240 PAW UNITS required to finish Step #2.



And to update the farmyard progress....



Pookie had a girl. Meet Midnight.

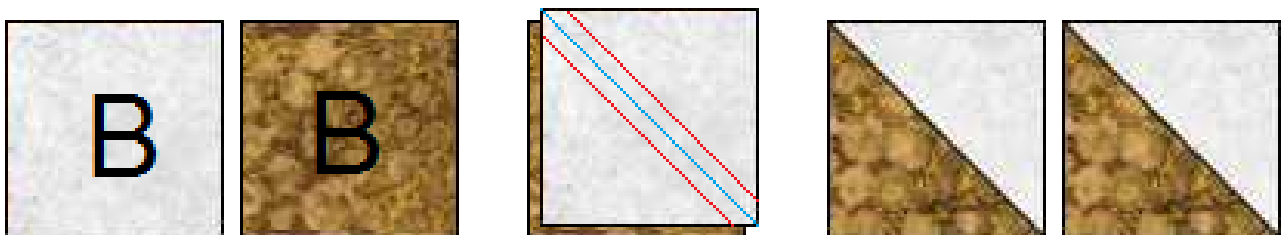
Bear Paw Quilt Block Tutorial

The following instructions will result in a 7.5" square block including seam allowances and will finish at 7" square. I press all my seams open. If you prefer to press to one side, when making the PAW UNITS press seams toward the Light Brown D square and when making and adding the sashing press toward the Background C rectangles.

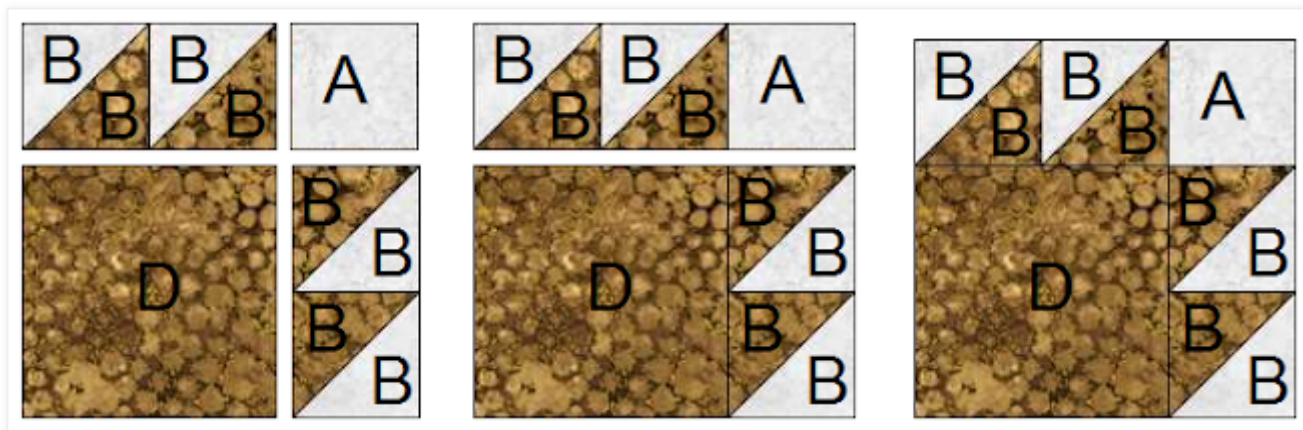
Using an accurate 1/4" seam is required. For more information on how to test the accuracy of your 1/4" seam, please click [here](#).

BEAR PAW block		to make ONE block
Background	A	4 @ 1.5" squares
	B	8 @ 2" squares
	C	4 @ 1.5" x 3.5"
Light Brown	B	8 @ 2" squares
	D	4 @ 2.5" squares
Dark Brown	A	1 @ 1.5" square

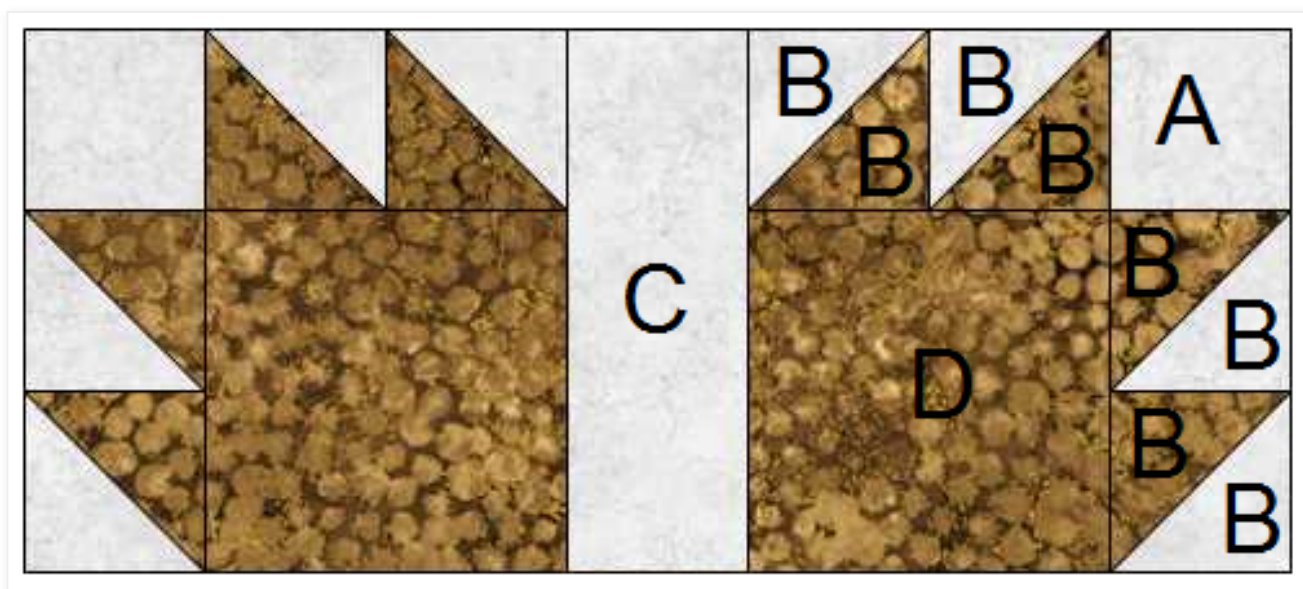
Step 1: Please note that the fabric squares should be ‘sandwiched’ with right sides facing together, and line up on all sides as accurately as possible. The diagram does not show this accuracy for demonstrative purposes. Draw a diagonal line across the wrong side of the Background (B) square. This is your guide line. Place the Background (B) square on the Light Brown (B) square and sew a ¼" seam on EACH SIDE of the blue line from edge to edge, as shown in red. Cut along the blue guide line. Press the seams open and trim each of the resulting Half Square Triangles (HST) to 1.5". (For a more detailed guide on how to make these HST units please [click here](#).)



Step 2: Sew these HST units together in opposite pairs. Add the Background (A) square to the top set. Add the Light Brown (D) square to the bottom set. Sew the sets together to complete the PAW UNITS. Block will be 3.5" square including seam allowances and will finish at 3" square.



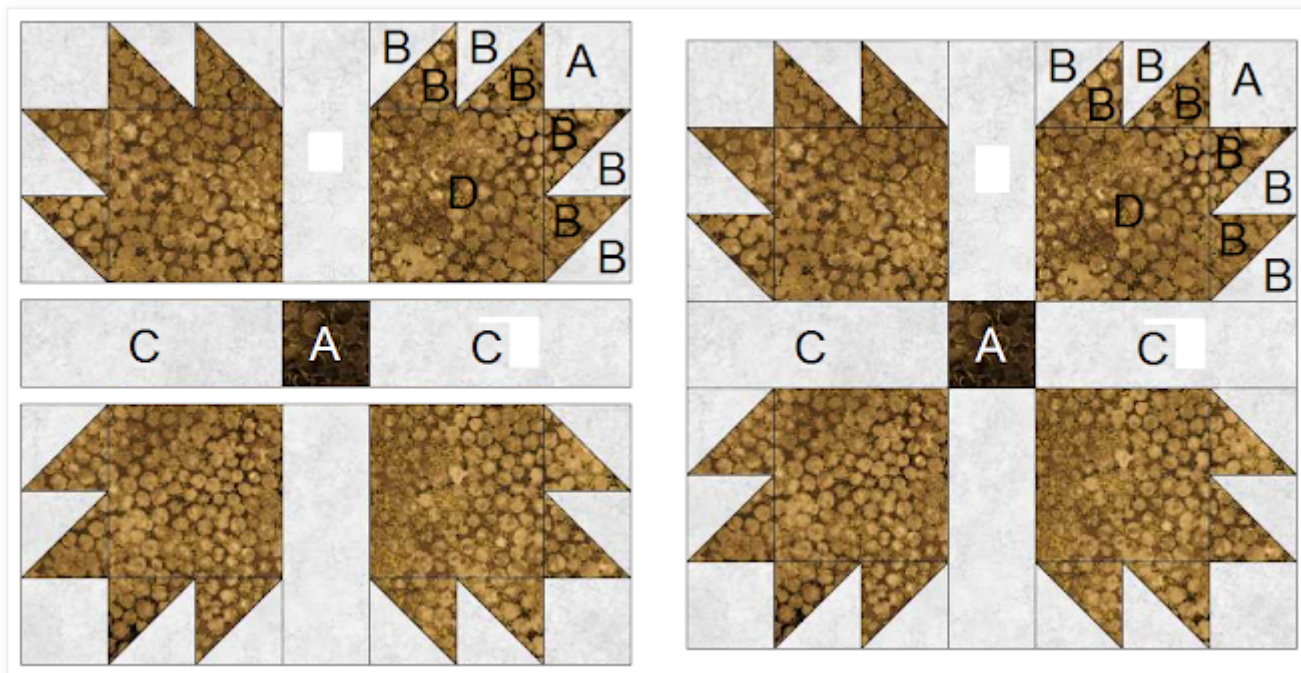
Step 3: Sew the PAW UNITS to the sides of the Background (C) rectangles.



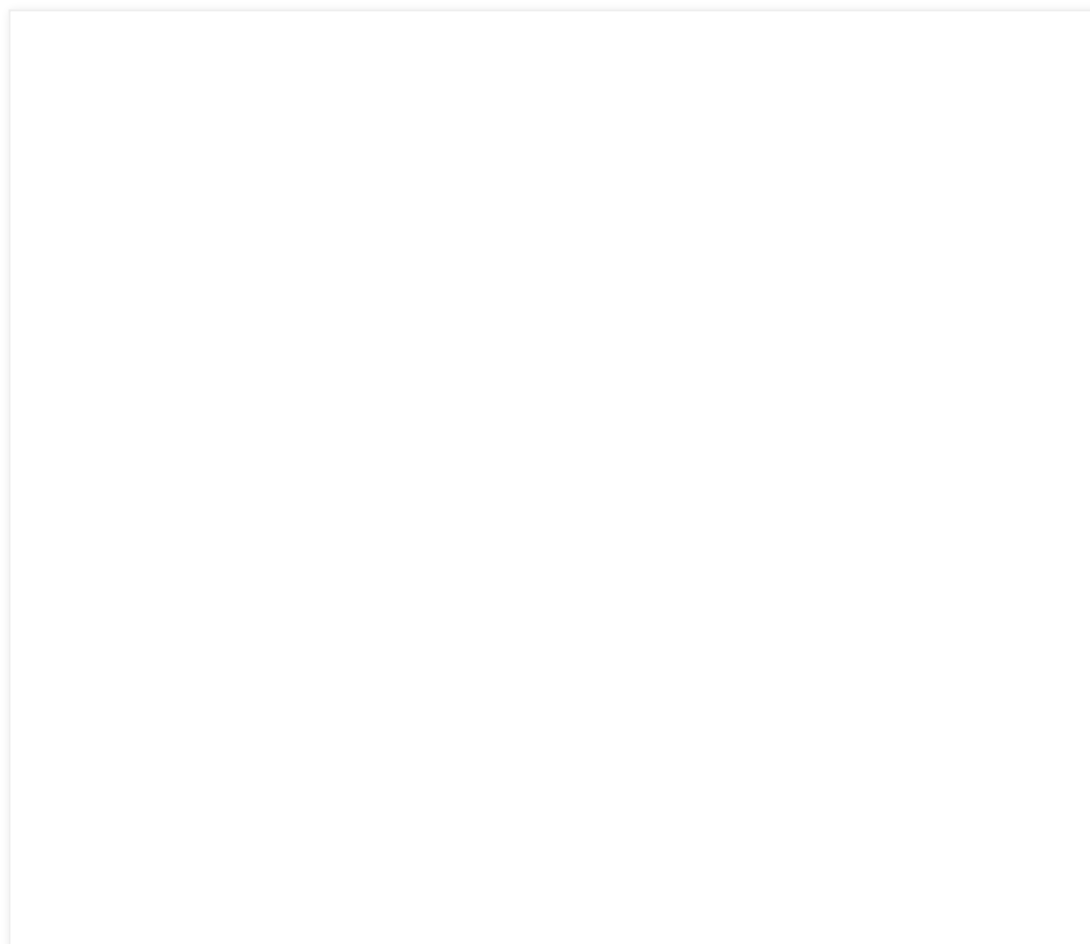
Step 4: To make the CROSS SASHING, sew the Dark Brown (A) square between the Background (C) rectangles.

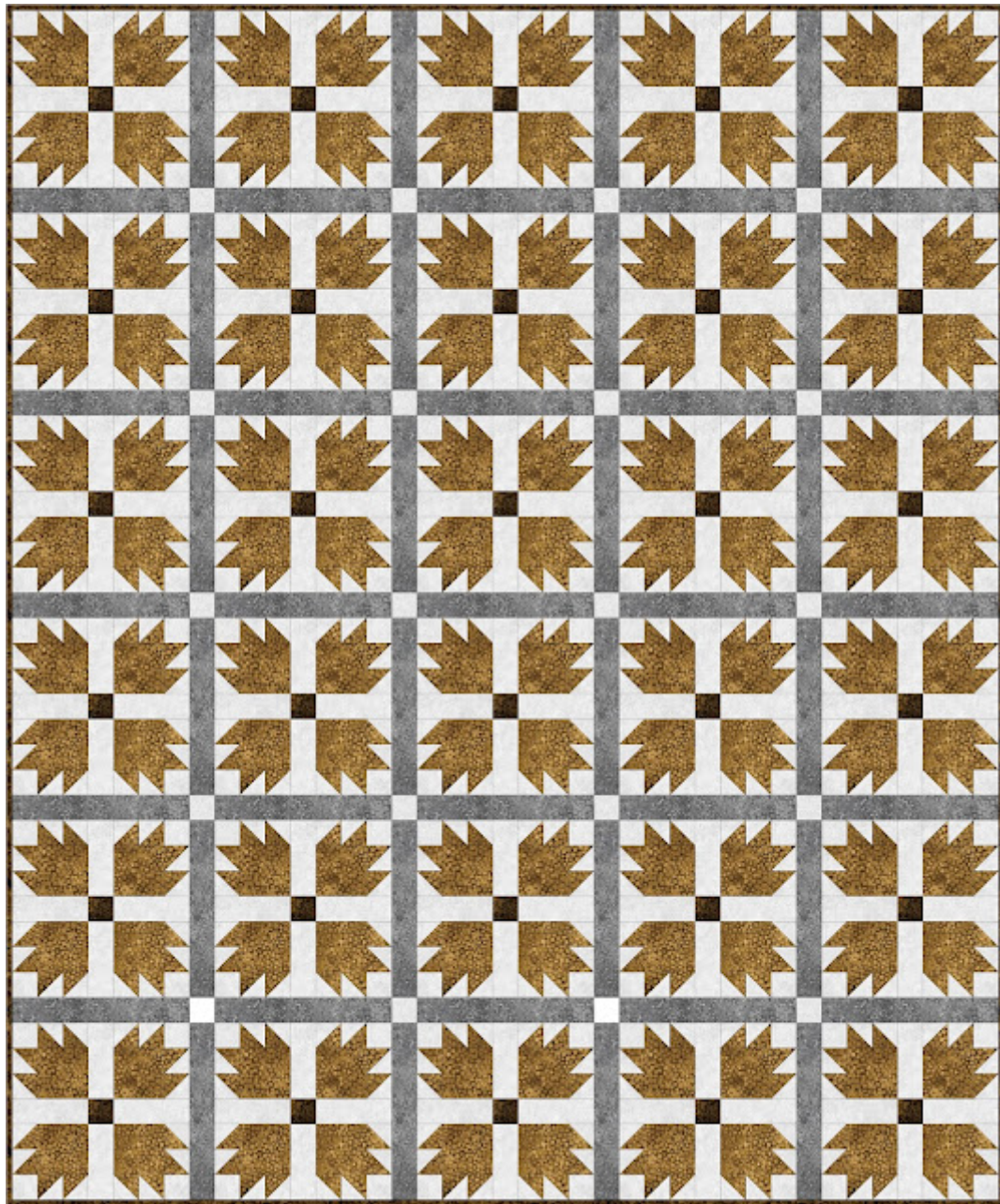


Step 5: Sew the CROSS SASHING units between the PAW PAIR sets.



This simple block, used on it's own, would make a handsome traditional style baby quilt. The Grey sashing strips would measure 1.5" x 7.5" and would require Background 1.5" squares for cornerstones. This setting would measure 39" wide by 47" long.





BEAR PAW baby quilt finishes at 39" x 47"