

featuring PANDALICIOUS COLLECTION BY KATARINA ROCCELLA

PANDALICIOUS

# Panda smiles

DESIGNED BY AGF STUDIO

X  
X  
X  
X  
X  
X  
X  
X  
X  
X  
X  
X  
X  
X  
X



FREE PATTERN

XXXXXXXXXXXXXXXXXXXXXXXXXXXXXXXX



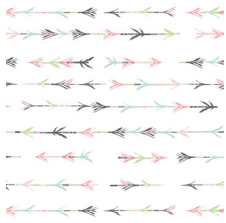
# Panda smiles

DESIGNED BY AGF STUDIO

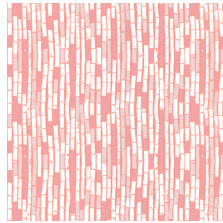
## PANDALICIOUS

FABRICS DESIGNED BY KATARINA ROCCELLA

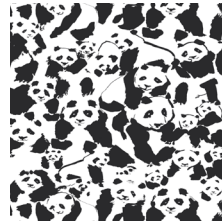
BAO BAO SWEET



PND-10120  
BAMBOO SHOOTS LIGHT



PND-10121  
ZHU NECTAR



PND-10122  
PANDALINGS POD ASSURED



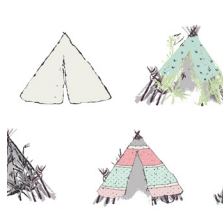
PND-10123  
NI HAO FAIRIES YU



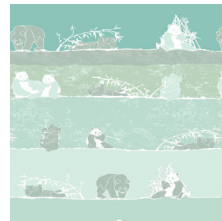
PND-10124  
YINGHUA CHERRYLIGHT



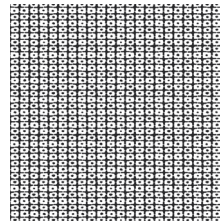
PND-10125  
HIDDEN PANDA COTTONBUD



PND-10126  
GANSU VILLAGE CLOUDWHITE



PND-10127  
PANDA SAYS YUM

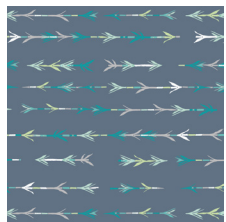


PND-10129  
PANDA PATCHES CONTRAST

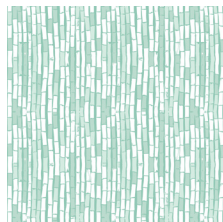


PND-10130  
PANDAGARDEN RECESS

TIAN TIAN BREEZE



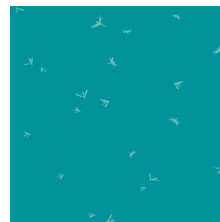
PND-20120  
BAMBOO SHOOTS COOL



PND-20121  
ZHU MIST



PND-20122  
PANDALINGS POD NIGHT



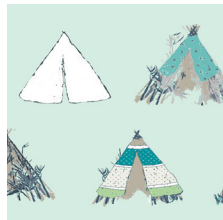
PND-20123  
NI HAO FAIRIES HU



PND-20124  
YINGHUA RAIN WATER



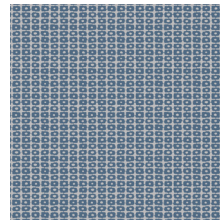
PND-20124  
HIDDEN PANDA LEAF



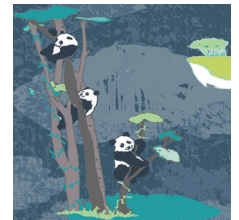
PND-20126  
GANSU VILLAGE MINTGLOW



PND-20128  
PANDALINGS POD SHADOW



PND-20129  
PANDA PATCHES BLUE



PND-20130  
PANDAGARDEN NAPTIME

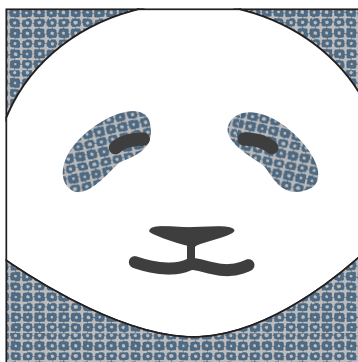


# anda smiles

FINISHED SIZE | 16" x 16"

## FABRIC REQUIREMENTS

Fabric <b>A</b>	PND-20129	½ yd.
Fabric <b>B</b>	PE-413	½ yd.
Fabric <b>C</b>	PE-408	½ yd.



## CUTTING DIRECTIONS

### Cut from Fabric **A**:

- One (1) 17" square.
- Two (2) 17" x 11" rectangles.
- Two (2) Pattern Piece A (One left side, one Right side).

### Cut from Fabric **B**:

- One (1) 17" square
- Two (2) 17" x 11" rectangles.
- Two (2) Pattern Piece A2 (One left side, one Right side)
- Two (2) Pattern Piece B.
- Two (2) Pattern Piece C.
- Two (2) Pattern Piece E.

### Cut from Fabric **C**:

- Two (2) Pattern Piece D.
- Two (2) Pattern Piece F.

## CONSTRUCTION

*Sew all rights sides together with ½" seam allowance.*

- This pillow is made with fusible web which is a double sided adhesive used for appliqué. Read the product instructions along with these steps.
- After cutting the squares and the rectangles from fabrics **A** and **B** take the left over piece of fabric, peel off one of the papers of the fusible web and fuse it to wrong side of the fabric, by pressing it lightly with the iron.
- Trace with a pencil each pattern piece on the paper side of the fusible. Make sure every piece is cut on the correct fabric and cut neatly on the line.
- On Fabric **C** notice the pattern Piece F is divided in two, Join them with tape using the arrows as notches then trace it and cut it like the other pieces..
- When all the pieces are cut assemble the face of the pillow in this order:
  - 17" Square
  - Pattern Piece F
  - Pattern Piece A (or A2)
  - Pattern Piece B
  - Pattern Piece C (or D+E)
- Peel paper away and leave the adhesive on the fabric.
- Position the design with the glue side down and press smooth out. Now Iron.
- Cut out a piece of batting 18" x 18", smooth fabric top over it and pin in place.
- Although you can use fusible web for seams without sewing we recommend you sew the raw edges, especially on the big pieces (Pattern Piece F and A). Use a stitch that will prevent the pieces from fraying, like a zig-zag stitch or an appliqué stitch.

## ASSEMBLY

*Sew rights sides together.*

- These pillows have an envelope style back.
- Lay your pillow top right side facing up and layer the back pieces on top, right sides facing down. Make sure the hemmed edges are overlapping each other and match the top and back edges together.
- Pin and sew together at  $\frac{1}{2}$ " seam allowance.
- Flip right side out, making sure the corners are turned out nicely and stuff with your 16" pillow forms.
- Congrats! Time to snuggle up with your new pillows!



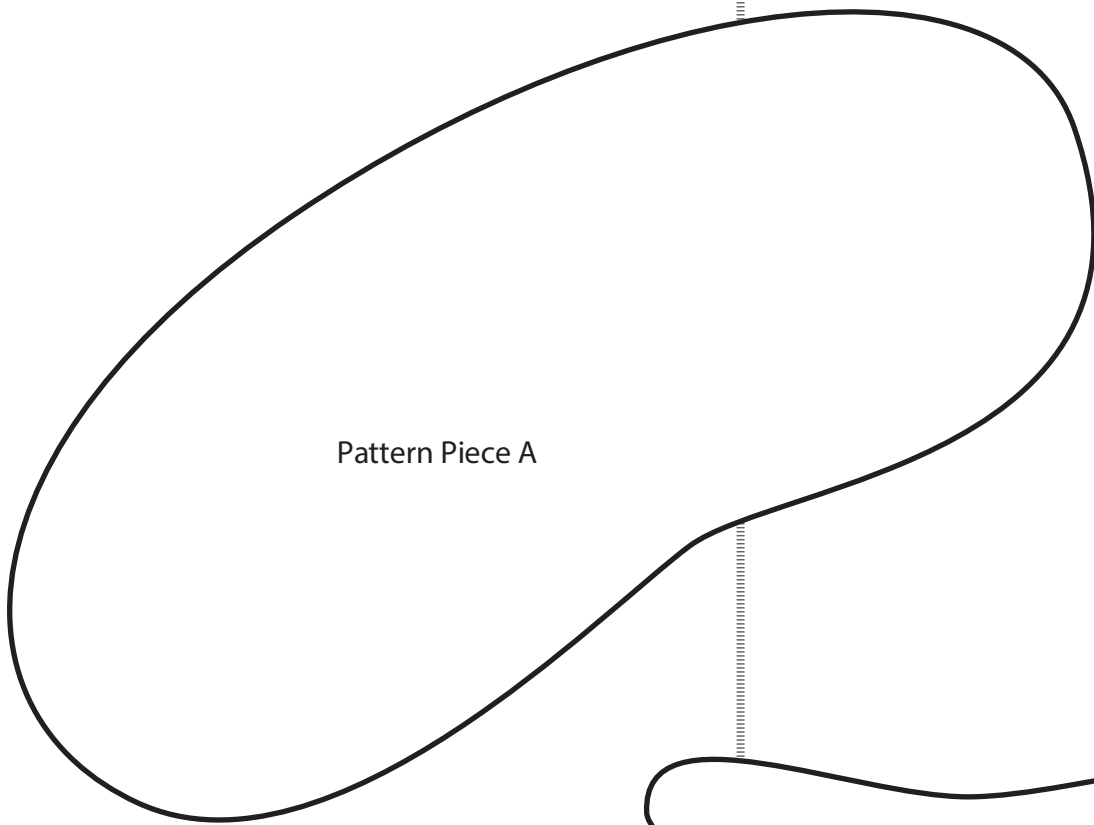
[artgalleryfabrics.com](http://artgalleryfabrics.com)

NOTE: While all possible care has been taken to ensure the accuracy of this pattern, We are not responsible for printing errors or the way in which individual work varies. Please read instructions carefully before starting the construction of this quilt. If desired, wash and iron your fabrics before starting to cut.

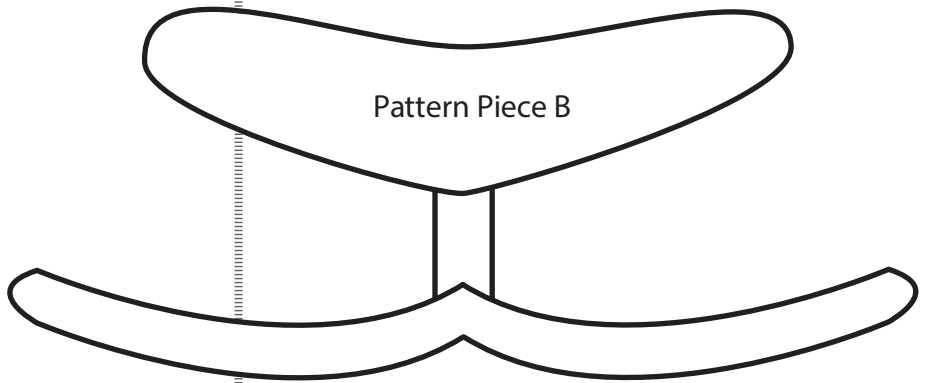
© 2016 Courtesy of Art Gallery Quilts LLC. All Rights Reserved.



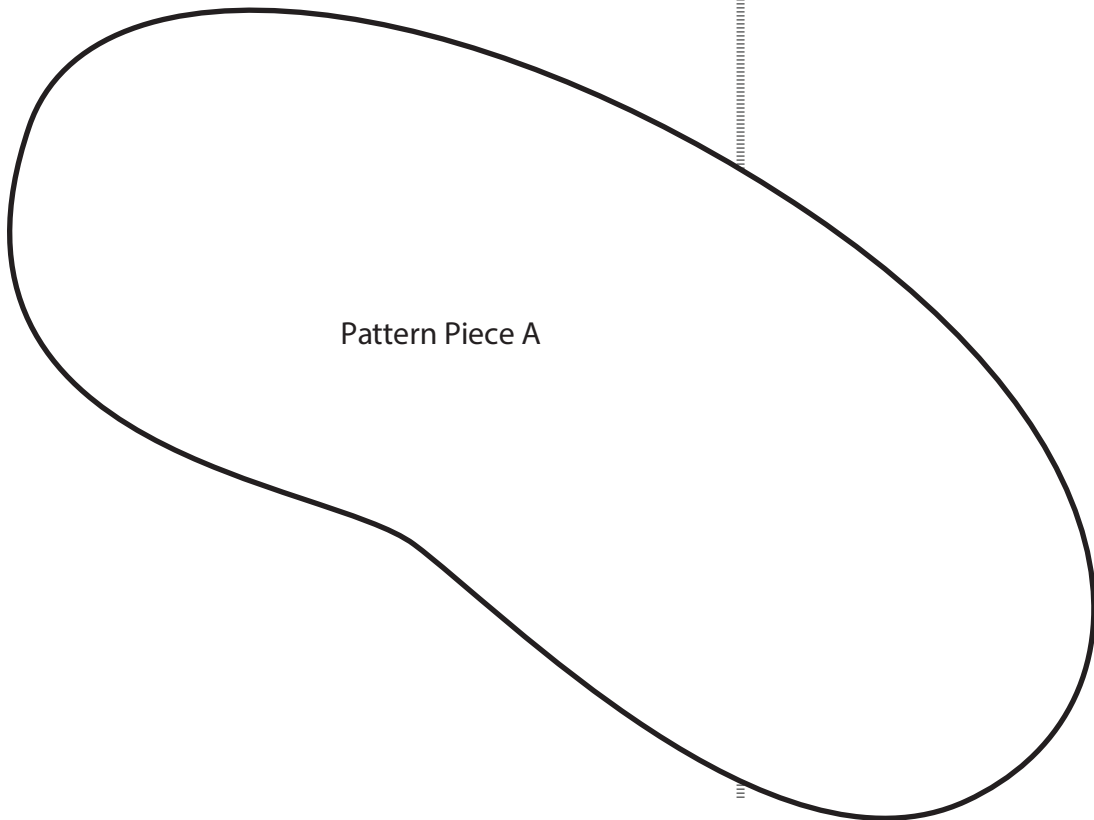
Congratulations  
& enjoy



Pattern Piece A



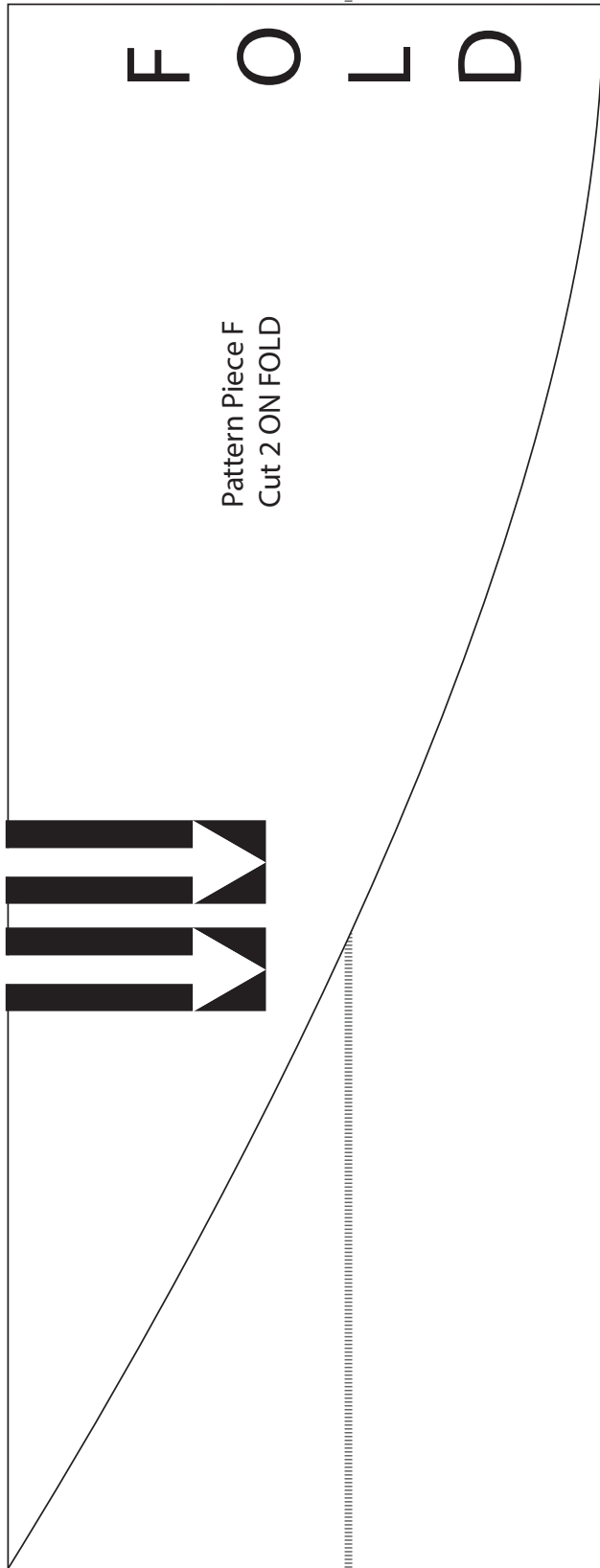
Pattern Piece B



Pattern Piece A







Pattern Piece F  
 Cut 2 ON FOLD

F O L D