

PROJECT: Supernova
Blocks in alternating colorways create the look of movement on
a bed-size quilt.

DESIGNER: Sarah J. Maxwell of Designs by Sarah J (designsbysarahj.com)



QUILT

Finished size: 96½" square

Finished block: 24" square

MATERIALS

Yardages and cutting instructions are based on 42" of usable fabric width.

- 1¾ yards periwinkle print (A blocks)
- 1¾ yards solid navy (A blocks, binding)
- ¾ yard solid turquoise (A blocks)
- ⅜ yard turquoise print (A blocks)
- ⅜ yard gray-and-white print (A blocks)
- 1¾ yards coral print (B blocks)
- 1¼ yards solid orange (B blocks)
- 1¼ yards solid light gray (B blocks)
- ¾ yard aqua print (B blocks)
- ⅜ yard solid aqua (B blocks)
- ⅜ yard white floral (B blocks)
- 8¾ yards backing fabric
- 105" square batting

CUT FABRICS

Cut pieces in the following order.

From periwinkle print, cut:

- 4—17¼" squares, cutting each diagonally twice in an X for 16 large triangles total
- 8—8½" squares

From solid navy, cut:

- 10—2½×42" binding strips
- 16—8⅞" squares, cutting each in half diagonally for 32 medium triangles total

From gray print, cut:

- 8—9¼" squares, cutting each diagonally twice in an X for 32 small triangles total
- 32—4½" squares

From solid turquoise, cut:

- 32—4⅞" squares, cutting each in half diagonally for 64 extra-small triangles total

From turquoise print, cut:

- 2—4½×42" strips

From gray-and-white print, cut:

- 2—4½×42" strips

From coral print, cut:

- 4—17¼" squares, cutting each diagonally twice in an X for 16 large triangles total
- 8—8½" squares

From solid orange, cut:

- 16—8⅞" squares, cutting each in half diagonally for 32 medium triangles total

From solid light gray, cut:

- 8—9¼" squares, cutting each diagonally twice in an X for 32 small triangles total
- 32—4½" squares

From aqua print, cut:

- 32—4⅞" squares, cutting each in half diagonally for 64 extra-small triangles total

From solid aqua, cut:

- 2—4½×42" strips

From white floral, cut:

- 2—4½×42" strips

ASSEMBLE A BLOCKS

Measurements include ¼" seam allowances. Sew with right sides together unless otherwise stated.

Press seams in directions indicated by arrows on diagrams. If no direction is specified, press seam toward darker fabric.

- 1) Gather a periwinkle print large triangle and two solid navy medium triangles. Referring to **Diagram 1**, sew a medium triangle to each short edge of the large triangle to make a large Flying Geese unit. The unit should be 16½×8½" including seam allowances. Repeat to make 16 large Flying Geese units total.

- 2) Gather a gray print small triangle and two solid turquoise extra-small triangles. Referring to **Diagram 2**, sew an extra-small triangle to each short edge of the small triangle to make a small Flying Geese unit. The unit should be 8½×4½" including seam allowances. Repeat to make 32 small Flying Geese units total.

- 3) Sew together a turquoise print 4½×42" strip and a gray-and-white print 4½×42" strip to make Strip Set A (**Diagram 3**). Repeat to make a second Strip Set A. Cut strip sets into sixteen 4½"-wide A segments total.

- 4) Sew together two A segments to make a Four-Patch unit (**Diagram 4**). The unit should be 8½" square including seam allowances. Repeat to make eight Four-Patch units total.

- 5) Referring to **Diagram 5**, lay out four small Flying Geese units, four gray print 4½" squares, and one Four-Patch unit in three rows. Sew together pieces in each row. Join rows to make a star unit. The unit should be 16½" square including seam allowances. Repeat to make eight star units total.

- 6) Referring to **Diagram 6**, lay out two large Flying Geese units, one periwinkle print 8½" square, and one star unit in two rows (note orientation of Four-Patch unit). Sew together pieces in each row. Join rows to make Block A. The block should be 24½" square including seam allowances. Repeat to make eight A blocks total.

ASSEMBLE B BLOCKS

- 1) Referring to Assemble A Blocks, Step 1, use coral print large triangles and solid orange medium triangles to make 16 large Flying Geese units.

- 2) Referring to Assemble A Blocks, Step 2, use solid light gray small triangles and aqua print extra-small triangles to make 32 small Flying Geese units.
- 3) Referring to Assemble A Blocks, steps 3 and 4, use solid aqua $4\frac{1}{2} \times 42$ " strips and white floral $4\frac{1}{2} \times 42$ " strips to make two B strip sets. Cut strip sets into sixteen $4\frac{1}{2}$ "-wide B segments. Sew together B segments in pairs to make eight Four-Patch units.
- 4) Referring to Diagram 7, lay out four small Flying Geese units, four solid light gray $4\frac{1}{2}$ " squares, and one Four-Patch unit in three rows. Sew together pieces in each row. Join rows to make a star unit. The unit should be $16\frac{1}{2}$ " square including seam allowances. Repeat to make eight star units total.
- 5) Referring to Diagram 8, lay out two large Flying Geese units, one coral print $8\frac{1}{2}$ " square, and one star unit in two rows (note orientation of Four-Patch unit). Sew together pieces in each row. Join rows to make Block B. The block should be $24\frac{1}{2}$ " square including seam allowances. Repeat to make eight B blocks total.

ASSEMBLE QUILT TOP

- 1) Referring to **Quilt Assembly Diagram**, lay out A and B blocks in four rows, alternating blocks as shown.
- 2) Sew together blocks in each row. Press seams in one direction, alternating direction with each row. Join rows to complete quilt top. Press seams in one direction.

FINISH QUILT

- 1) Layer quilt top, batting, and backing; baste.
- 2) Quilt as desired. Sarabeth Rebe machine-quilted a double swirl design across the quilt top.
- 3) Bind with solid navy binding strips.

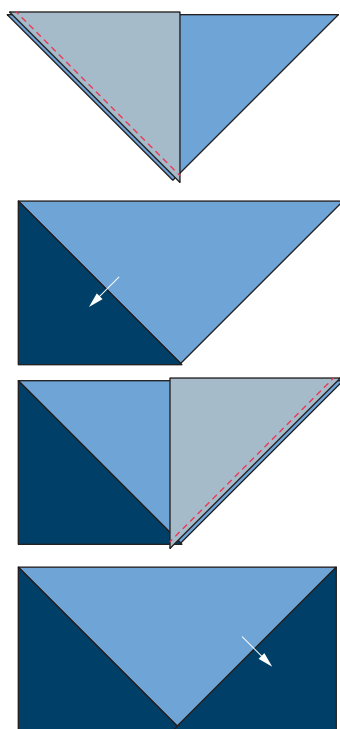


DIAGRAM 1

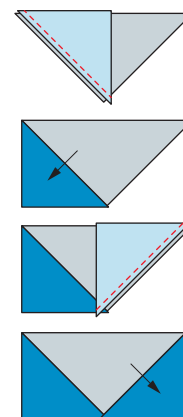
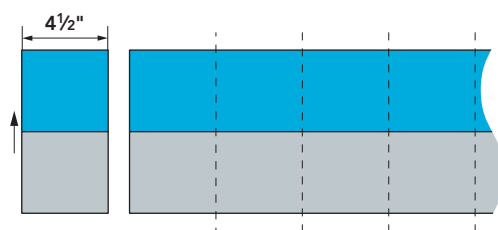


DIAGRAM 2



STRIP SET A
DIAGRAM 3

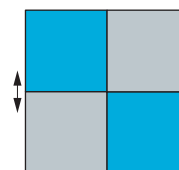


DIAGRAM 4

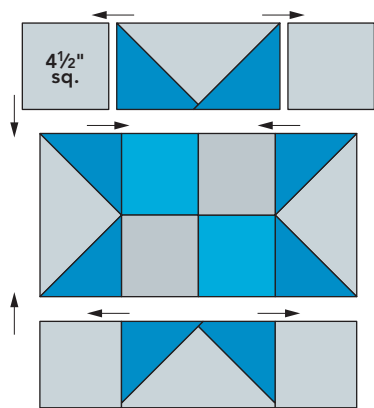
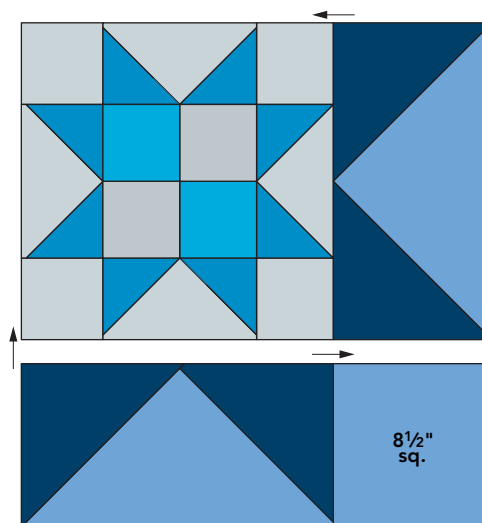


DIAGRAM 5



BLOCK A
DIAGRAM 6

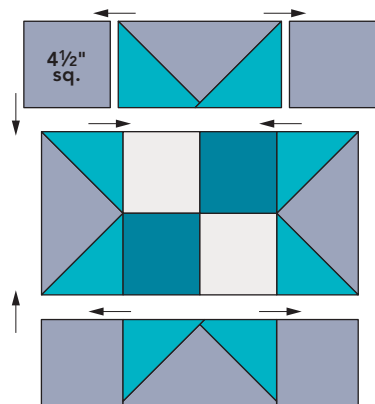
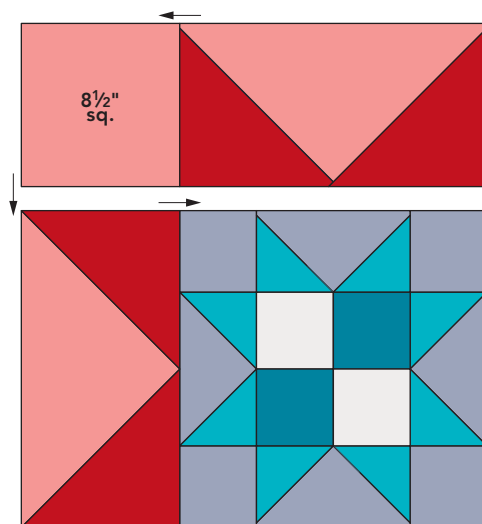
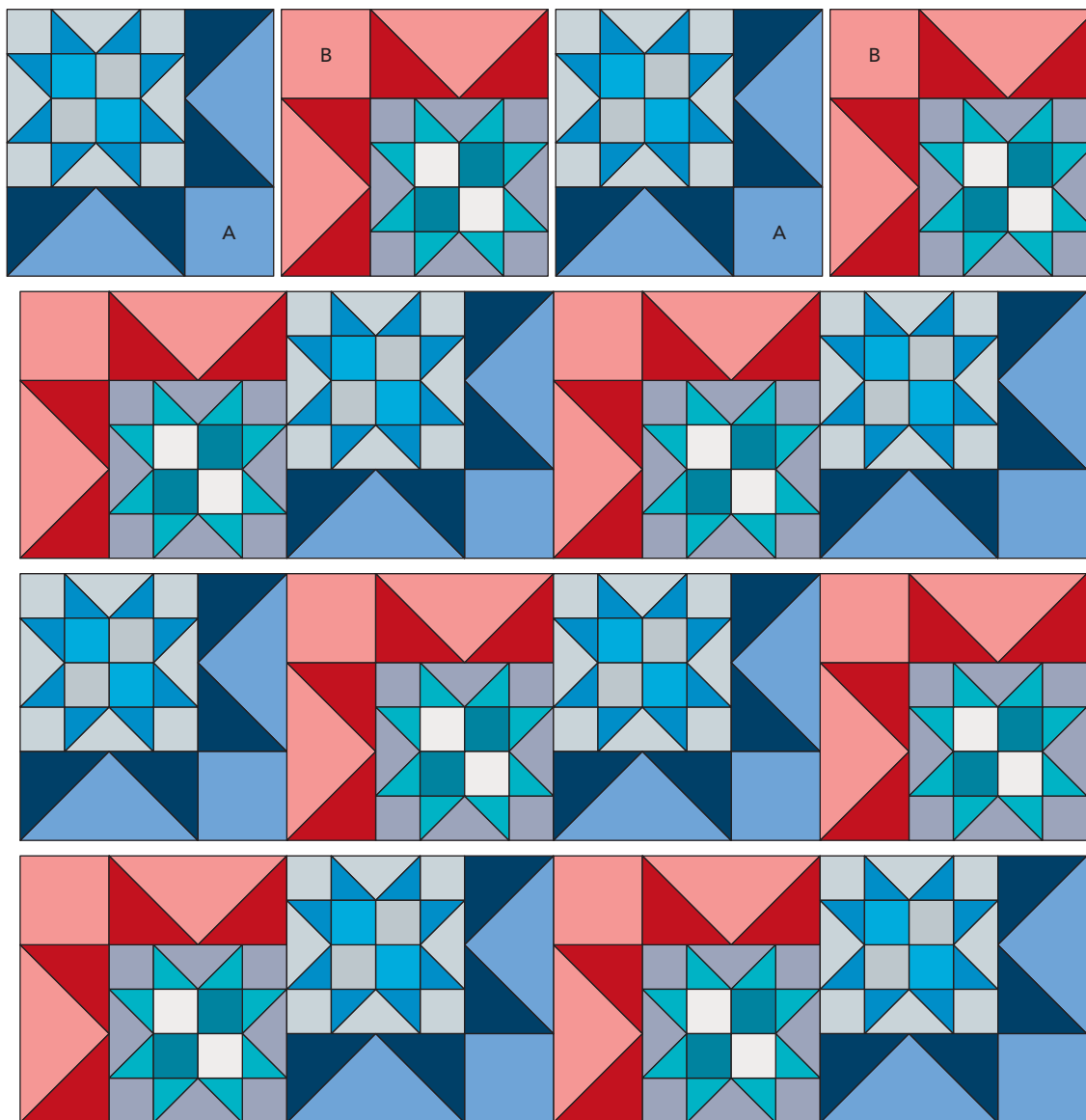


DIAGRAM 7



BLOCK B
DIAGRAM 8



QUILT ASSEMBLY DIAGRAM