

## PROJECT: Evergreen Stocking

Feature a simple tree block in festive stockings.

**INSPIRED BY:** *Tree Farm* from designer Wendy Sheppard ([ivoryspring.wordpress.com](http://ivoryspring.wordpress.com))

**QUILT TESTER:** Diane Tomlinson



**FABRICS** are from the A Festive Medley collection by Jackie Robinson of Animas Quilts for Benartex ([benartex.com](http://benartex.com)).

**FINISHED STOCKING:** 9½×19½"  
**FINISHED BLOCK:** 6" square

### MATERIALS FOR ONE STOCKING

Yardages and cutting instructions are based on 42" of usable fabric width.

- ½ yard cream linen (stocking body, block, loop)
- 10" square green plaid (block)
- 5" square solid brown (block)
- ½ yard red plaid (lining, cuff)

### CUT FABRICS

Cut pieces in the following order.

Patterns are on *pages 5-11*. To make templates of patterns, see *Make Templates and Use Templates, page 12*.

#### From cream linen, cut:

- 1 each of patterns A, B, and C
- 1-2×5" rectangle
- 2-2×3½" rectangles
- 4-2×3" rectangles
- 2-2×2½" rectangles

#### From green plaid, cut:

- 1-2×5½" rectangle
- 1-2×4½" rectangle
- 1-2×3½" rectangle

#### From solid brown, cut:

- 1-1½×2" rectangle

#### From red plaid, cut:

- 1 each of patterns C and C reversed
- 1-5×15" rectangle

### ASSEMBLE TREE BLOCK

Measurements include ¼" seam allowances. Sew with right sides together unless otherwise stated.

Press seams in directions indicated by arrows on diagrams. If no direction is specified, press seam toward darker fabric.

**1** Referring to **Diagram 1**, place one end of a cream linen 2×3½" rectangle atop one end of green plaid 2×3½" rectangle; align edges. Use a pencil to mark a diagonal line on cream linen rectangle. Sew on marked line. Trim seam allowance to ¼". Repeat with remaining cream linen 2×3½" rectangle and opposite end of green plaid rectangle to make Unit A (**Diagram 2**). The unit should be 2×6½" including seam allowances.

**2** Referring to **Diagram 3**, repeat Step 1 with two cream linen 2×3" rectangles and green plaid 2×4½" rectangle to make Unit B. The unit should be 2×6½" including seam allowances.

**3** Referring to **Diagram 4**, repeat Step 1 with cream linen 2×2½" rectangles and green plaid 2×5½" rectangle to make Unit C. The unit should be 2×6½" including seam allowances.

**4** Referring to **Diagram 5**, sew together remaining cream linen 2×3" rectangles and solid brown 1½×2" rectangle to make Unit D. The unit should be 2×6½" including seam allowances.

**5** Referring to **Diagram 6**, lay out units A-D; join to make a tree block. The block should be 6½" square including seam allowances.

### ASSEMBLE STOCKING BODY

**1** Referring to **Diagram 7**, lay out cream linen A piece, tree block, and cream linen B piece. Sew together to make stocking front; press seams away from tree block.

**2** With right sides together and leaving top edge open, sew together stocking front and cream linen C piece to make stocking body. Turn right side out.

### MAKE CUFF AND LOOP

**1** With right side inside, fold red plaid 5×15" rectangle in half widthwise to make a 5×7½" rectangle. Sew short edges together with a ¼" seam allowance to make a tube (**Diagram 8**). Press seam in one direction. With wrong side inside, fold in half to make cuff. Topstitch folded edge, if desired.

**2** With wrong side inside, fold cream linen 2×5" rectangle in half lengthwise, crease to mark center, and unfold. Fold raw edges in to meet at center. Refold strip in half. Topstitch along folds through all layers to make loop strip (**Diagram 9**).

### FINISH STOCKING

**1** With right sides together, sew together red plaid C and C reversed pieces, leaving top edge open and a 4" opening for turning in a straight edge, to make stocking lining (**Diagram 10**). Do not turn right side out.

**2** Slip cuff, folded edge down, over stocking body. Align top raw edges and align cuff seam with heel-side seam (**Diagram 11**). Fold loop strip in half. Align loop raw edges with cuff raw edges at seam; baste in place.

**3** With right sides together, insert stocking body in stocking lining (**Diagram 12**). Sew together top raw edges, stitching through all layers. Turn right side out through opening in lining; hand-sew opening in lining closed. Insert lining into stocking to complete stocking.

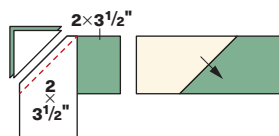
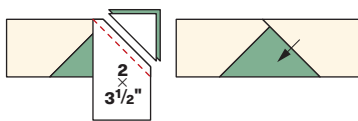
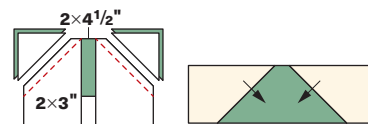


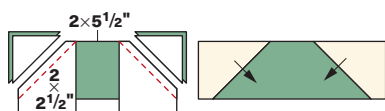
Diagram 1



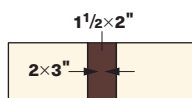
Unit A  
Diagram 2



Unit B  
Diagram 3



Unit C  
Diagram 4



Unit D  
Diagram 5

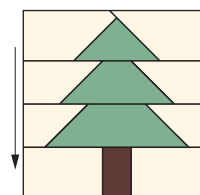


Diagram 6

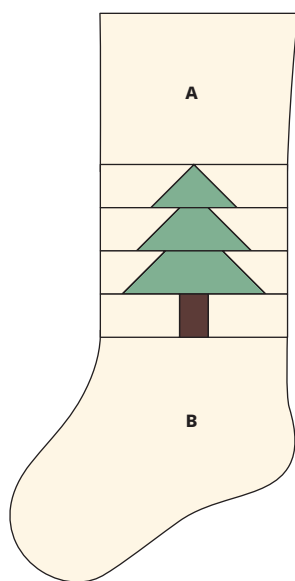


Diagram 7

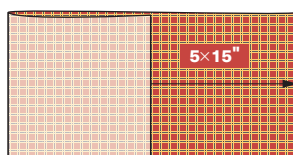


Diagram 8

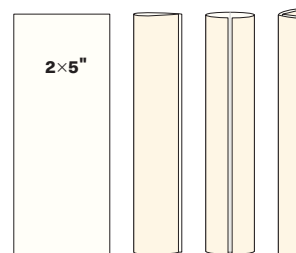


Diagram 9

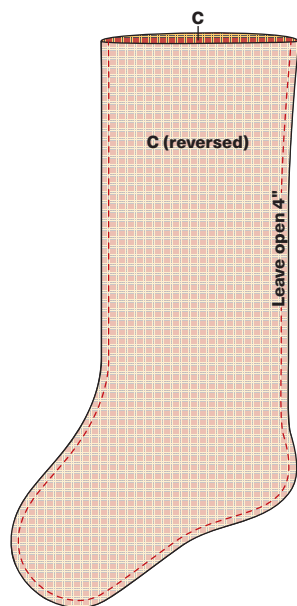


Diagram 10

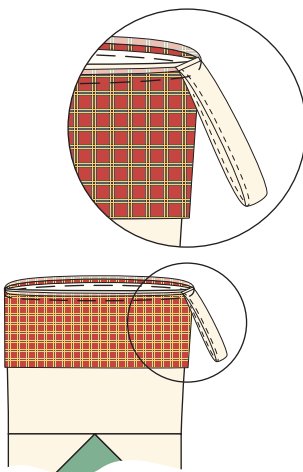


Diagram 11

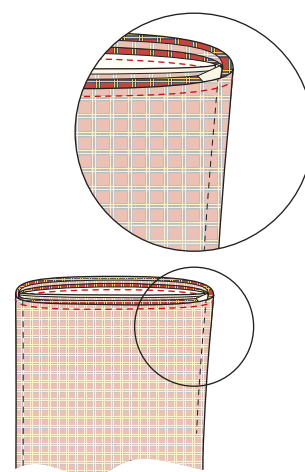


Diagram 12

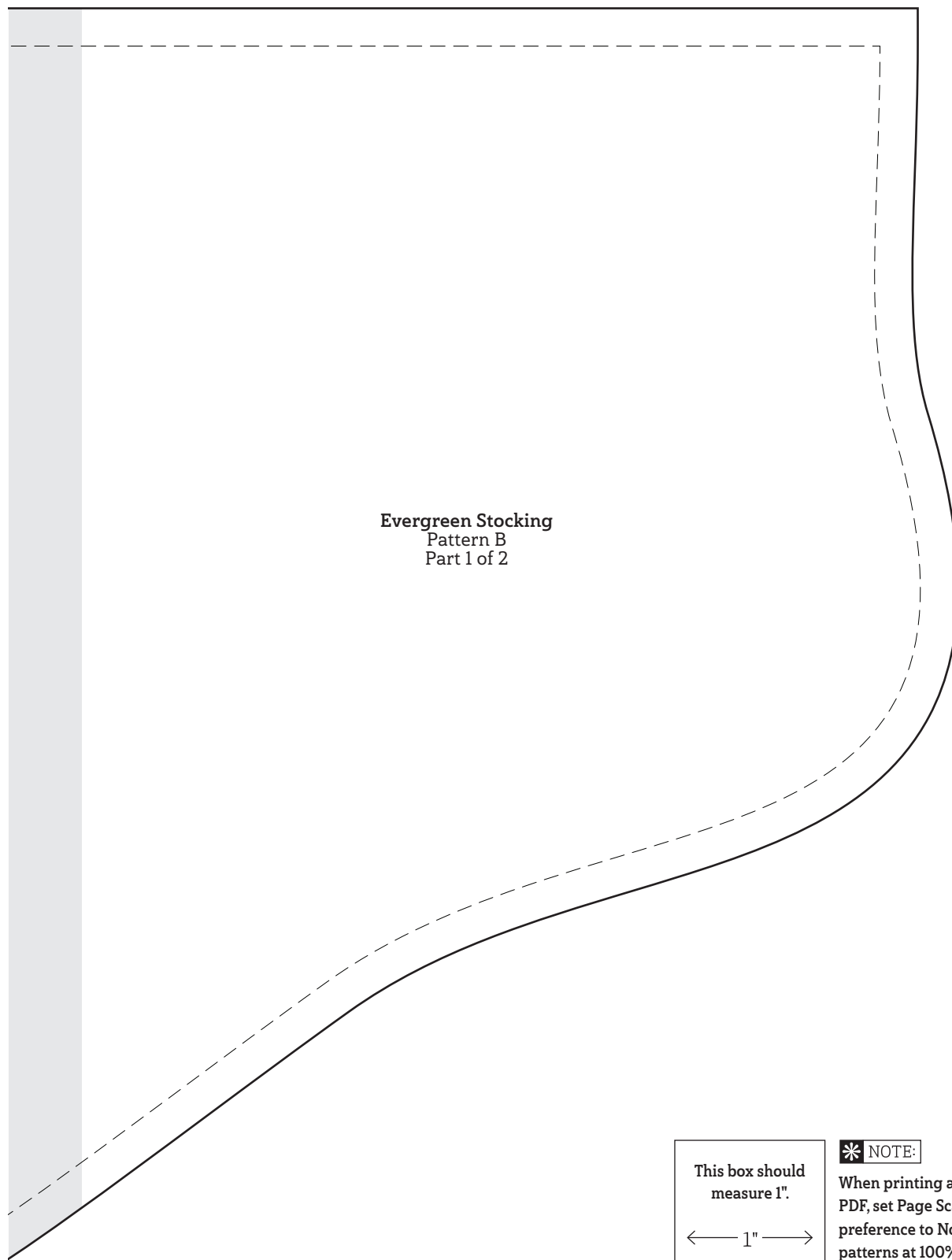
**Evergreen Stocking**  
Pattern A

This box should  
measure 1".

← 1" →

**\* NOTE:**

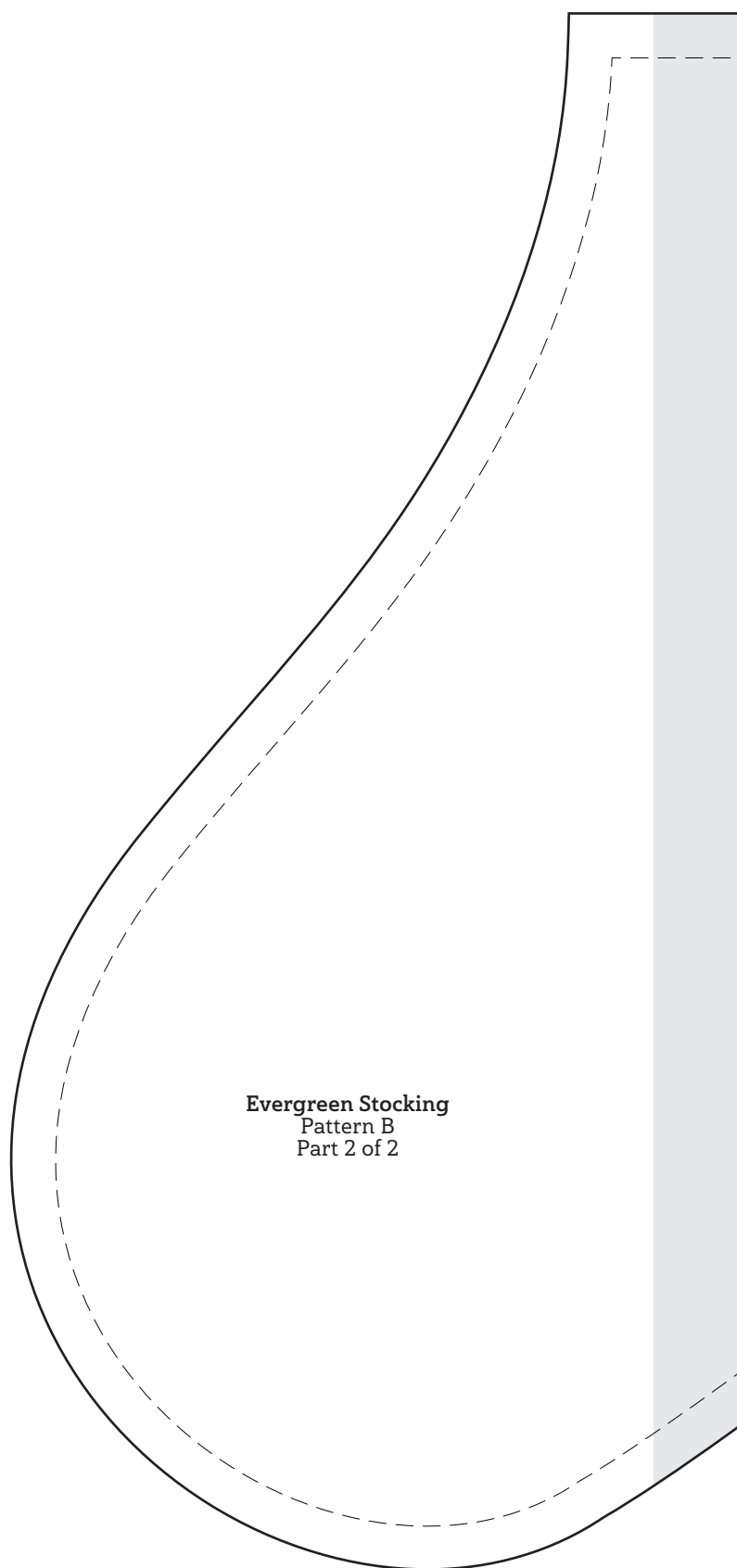
When printing a downloadable PDF, set Page Scaling preference to None to print patterns at 100%. Do not use Shrink to Fit or Fit to Printable Area.



**\* NOTE:**

When printing a downloadable PDF, set Page Scaling preference to None to print patterns at 100%. Do not use Shrink to Fit or Fit to Printable Area.



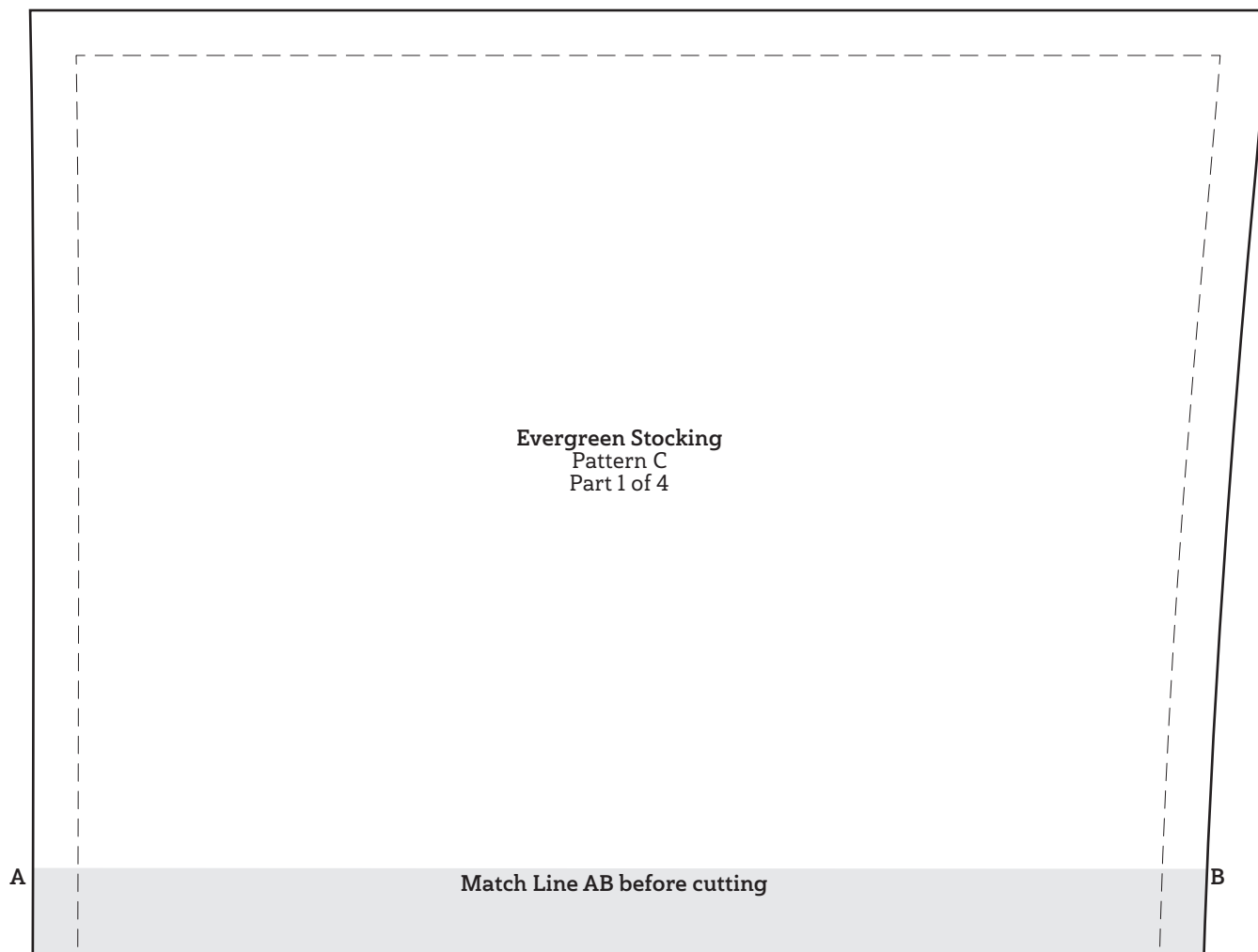


This box should  
measure 1".

← 1" →

**\* NOTE:**

When printing a downloadable PDF, set Page Scaling preference to None to print patterns at 100%. Do not use Shrink to Fit or Fit to Printable Area.



To make an entire pattern, cut out partial patterns on outside lines and tape together, overlapping shaded areas.

This box should measure 1".

← 1" →

**\* NOTE:**

When printing a downloadable PDF, set Page Scaling preference to None to print patterns at 100%. Do not use Shrink to Fit or Fit to Printable Area.





To make an entire pattern, cut out partial patterns on outside lines and tape together, overlapping shaded areas.

This box should measure 1".

← 1" →

**\* NOTE:**

When printing a downloadable PDF, set Page Scaling preference to None to print patterns at 100%. Do not use Shrink to Fit or Fit to Printable Area.



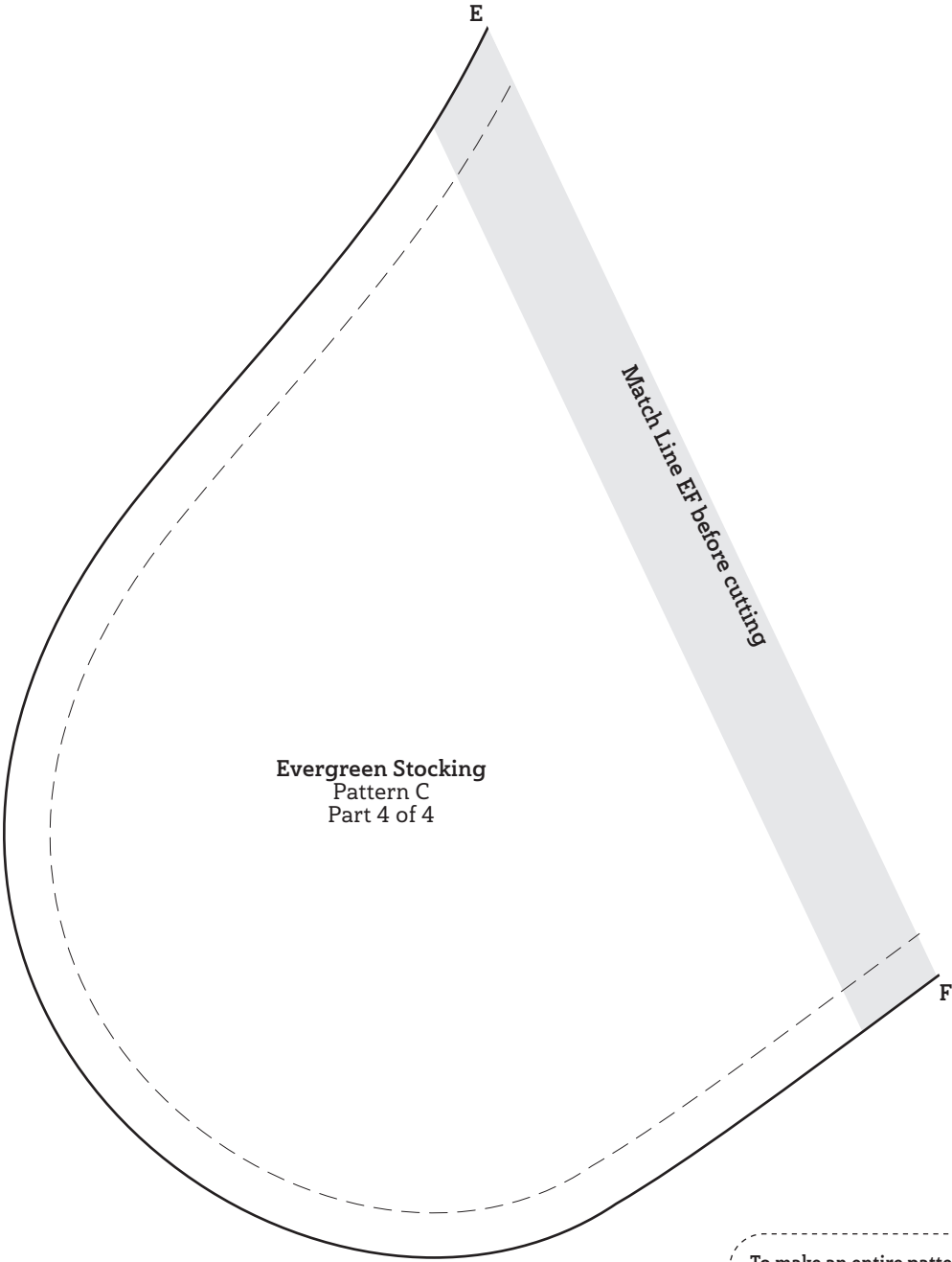
To make an entire pattern, cut out partial patterns on outside lines and tape together, overlapping shaded areas.

This box should measure 1".

← 1" →

**\* NOTE:**

When printing a downloadable PDF, set Page Scaling preference to None to print patterns at 100%. Do not use Shrink to Fit or Fit to Printable Area.



To make an entire pattern, cut out partial patterns on outside lines and tape together, overlapping shaded areas.

This box should measure 1".

← 1" →

**\* NOTE:**  
When printing a downloadable PDF, set Page Scaling preference to None to print patterns at 100%. Do not use Shrink to Fit or Fit to Printable Area.

## MAKE TEMPLATES

A template is a pattern made from extra-sturdy material so you can trace around it many times without wearing away the edges. Acrylic templates for many common shapes are available at quilt shops. Or you can make your own by duplicating printed patterns on template plastic.

To make permanent templates, purchase easy-to-cut template plastic, available at quilt shops and crafts supply stores. Lay the plastic over a printed pattern. Trace the pattern onto the plastic using a ruler and a permanent marker to ensure straight lines, accurate corners, and permanency.

For hand piecing and appliqué, make templates the exact size finished pieces will be (without seam allowances). For piecing, this means tracing the patterns' dashed lines.

For machine piecing, make templates that include seam allowances by tracing the patterns' solid and dashed lines onto the template plastic.

For easy reference, mark each template with its letter designation, grain line (if noted on the pattern), and block name. Cut out the traced shapes on their outside lines. Verify each template's shape and size by placing it over its printed pattern. Templates must be accurate; errors, however small, will compound many times as you assemble a quilt. To check templates' accuracy, make a test block before cutting the fabric pieces for an entire quilt.

## USE TEMPLATES

To mark on fabric, use a pencil, white dressmaker's pencil, chalk, or a special fabric marker that makes a thin, accurate line. Do not use a ballpoint or ink pen; it may bleed if washed. Test all marking tools on a fabric scrap before using them.

To make pieces for hand piecing or appliqué, place a template facedown on the wrong side of the fabric and trace. Then reposition the template at least  $\frac{1}{2}$ " away from the previous tracing (**Diagram 1**), trace again, and repeat. The lines you trace on the fabric are sewing lines. Mark cutting lines  $\frac{1}{4}$ " away from the sewing lines, or estimate the distance by eye when cutting out the pieces with scissors. For hand piecing, add a  $\frac{1}{4}$ " seam allowance; for hand appliqué, add a  $\frac{3}{16}$ " seam allowance.

Because templates used to make pieces for machine piecing have seam allowances included, you can use common tracing lines for efficient cutting. Place a template facedown on the wrong side of the fabric and trace. Then reposition the template without a space between it and the previous tracing (**Diagram 2**); trace again and repeat. Using a rotary cutter and ruler, cut pieces out, cutting precisely on the drawn lines.

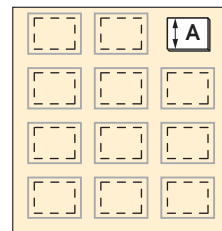


DIAGRAM 1

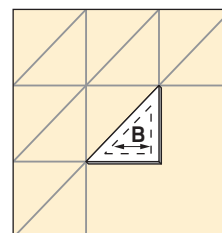


DIAGRAM 2