

PROJECT: Swizzle Sticks

The skinny strips separating the plain and pieced units in each block subtly stir the mix of bold colors. Four-Patch units in the sashing make it easy to keep the blocks aligned.

DESIGNER: Christine Barnes (christinebarnes.com)



FINISHED QUILT: 48½" square

FINISHED BLOCKS: 12" square

MATERIALS

Yardages and cutting instructions are based on 42" of usable fabric width.

- 6—¼-yard pieces assorted solids (blocks)
- ⅝-yard white-and-black stripe (blocks, binding)
- 12—⅛-yard pieces assorted solids (blocks)
- ¼-yard geometric floral (blocks)
- ⅛-yard gray-and-white print (blocks)
- 9×21" piece (fat eighth) each of multicolor stripe and multicolor floral (blocks)
- ¼-yard each of black tone-on-tone and white tone-on-tone (Four-Patch units)
- 1 yard white-and-black dot (sashing)
- ¾ yards backing fabric
- 57" square batting

CUT FABRICS

Cut pieces in the following order.

From each ¼-yard assorted solid, cut:

- 3–4½×12½" strips

From white-and-black stripe, cut:

- 5–2½×42" binding strips
- 6–¾×13" strips

From each ⅛-yard assorted solid, cut:

- 3–2½×4½" rectangles

From geometric floral, cut:

- 6–¾×13" strips
- 3–4½" squares

From gray-and-white print, cut:

- 6–¾×13" strips

From each multicolor stripe and multicolor floral, cut:

- 3–4½" squares

From each black tone-on-tone and white tone-on-tone, cut:

- 2–2×42" strips

From white-and-black dot, cut:

- 24–3½×12½" sashing strips

ASSEMBLE BLOCKS

Measurements include ¼" seam allowances. Sew with right sides together unless otherwise stated.

Press seams in directions indicated by arrows on diagrams. If no direction is specified, press seam toward darker fabric.

1 For one A block, gather two different solid 4½×12½" strips, two white-and-black stripe ¾×13" strips, four different solid 2½×4½" rectangles, and one geometric floral 4½" square.

2 Sew together a solid 4½×12½" strip and a white-and-black stripe ¾×13" strip to make a strip unit (**Diagram 1**). Be sure to press seams away from ¾"-wide strip, which will feel awkward because the seam allowances will want to go toward the narrow strip. Trim ends of white-and-black stripe strip even with solid strip. The unit should be 12½×4¾" including seam allowances. Repeat to make a second strip unit.

3 Referring to **Diagram 2**, sew together the solid 2½×4½" rectangles and geometric floral 4½" square to make center unit. The unit should be 12½×4½" including seam allowances.

4 Sew together strip units and center unit to make Block A (**Diagram 3**). Trim block to 12½" square including seam allowances (**Diagram 4**).

5 Using solid strips and rectangles in same colors, repeat steps 1–4 to make three A blocks total.

6 For one B block, gather two different solid 4½×12½" strips, two gray-and-white print ¾×13" strips, four different solid 2½×4½" rectangles, and one multicolor stripe 4½" square.

Repeat steps 2–4 to make Block B (**Diagram 5**). Using solid strips and rectangles in same colors, repeat to make three B blocks total.

7 For one C block, gather two different solid 4½×12½" strips, two geometric floral ¾×13" strips, four different solid 2½×4½" rectangles, and one multicolor floral 4½" square. Repeat steps 2–4 to make Block C (**Diagram 6**). Using solid strips and rectangles in same colors, repeat to make three C blocks total.

ASSEMBLE FOUR-PATCH UNITS

1 Sew together a black tone-on-tone 2×42" strip and a white tone-on-tone 2×42" strip to make a strip set (**Diagram 7**). Repeat to make a second strip set. Cut strip sets into thirty-two 2"-wide segments.

2 Sew together two 2"-wide segments to make a Four-Patch unit (**Diagram 8**). The unit should be 3½" square including seam allowances. Repeat to make 16 Four-Patch units total.

ASSEMBLE QUILT TOP

1 Referring to **Quilt Assembly Diagram**, lay out Four-Patch units, white-and-black dot sashing strips, and blocks A–C in seven horizontal rows; note orientations of Four-Patch units.

2 Sew together pieces in each row. Press seams toward sashing strips. Join rows to complete quilt top. Press seams away from block rows.

FINISH QUILT

1 Layer quilt top, batting, and backing; baste.

2 Quilt as desired. Sandra Bruce machine-quilted free-motion flower motifs across the quilt top (**Quilting Diagram**).

3 Bind with white-and-black stripe binding strips.

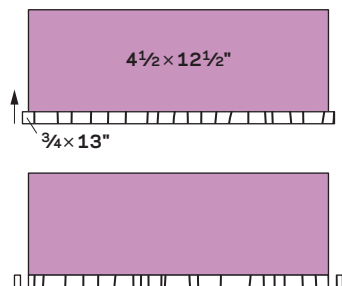


DIAGRAM 1

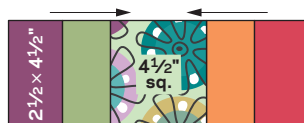
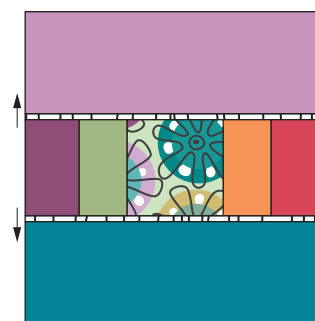


DIAGRAM 2



BLOCK A
DIAGRAM 3

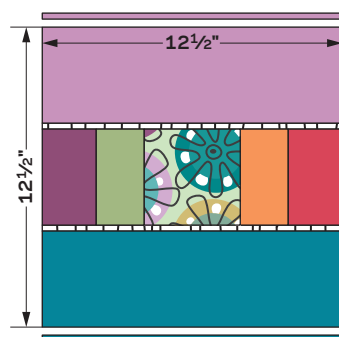
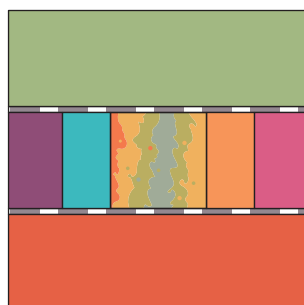
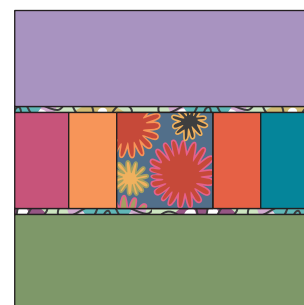


DIAGRAM 4



BLOCK B
DIAGRAM 5



BLOCK C
DIAGRAM 6

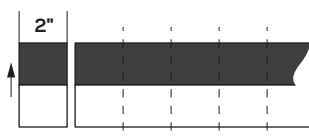


DIAGRAM 7

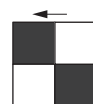
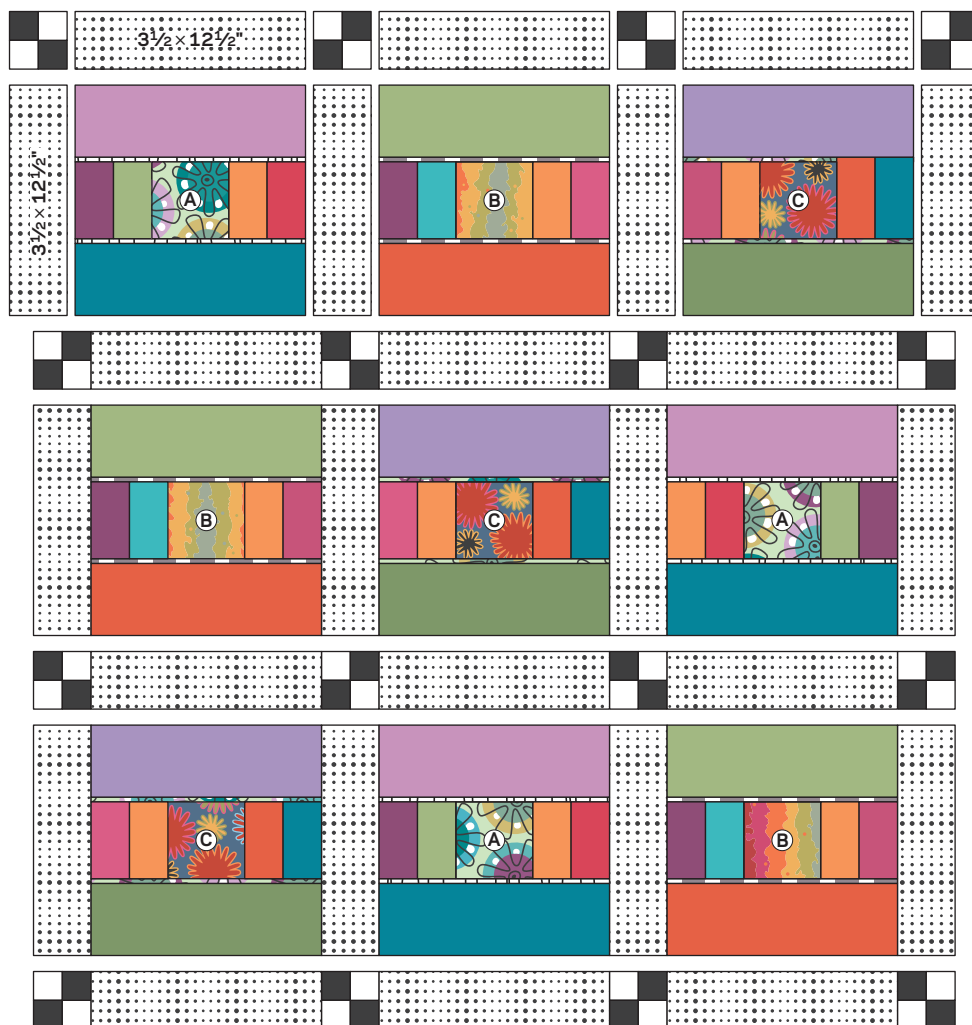
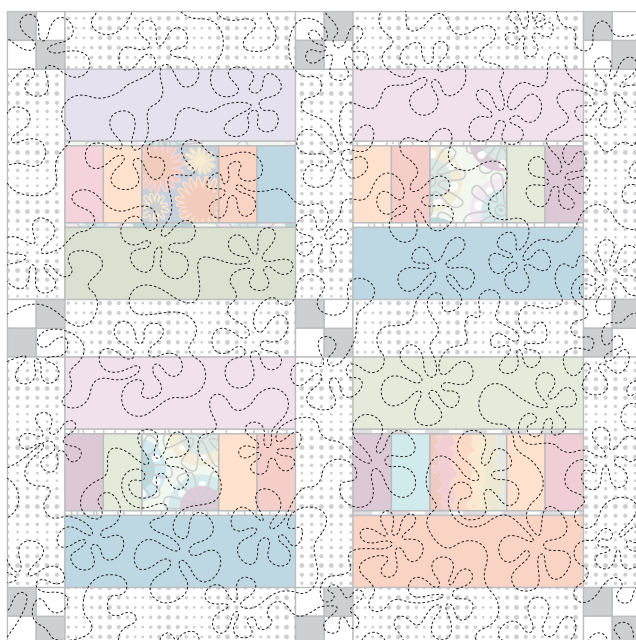


DIAGRAM 8



QUILT ASSEMBLY DIAGRAM



QUILTING DIAGRAM